

PLCB3 Monoclonal antibody, PBS Only

Catalog Number: 66668-1-PBS

Basic Information

Catalog Number: 66668-1-PBS	GenBank Accession Number: BC142681	Purification Method: Protein G purification
Size: 1mg/ml	GeneID (NCBI): 5331	CloneNo.: 1B8B3
Source: Mouse	UNIPROT ID: Q01970	
Isotype: IgG1	Full Name: phospholipase C, beta 3 (phosphatidylinositol-specific)	
Immunogen Catalog Number: AG15845	Calculated MW: 1234 aa, 139 kDa	
	Observed MW: 150 kDa	

Applications

Tested Applications:
WB, IHC, Indirect ELISA

Species Specificity:
human, mouse, rat

Background Information

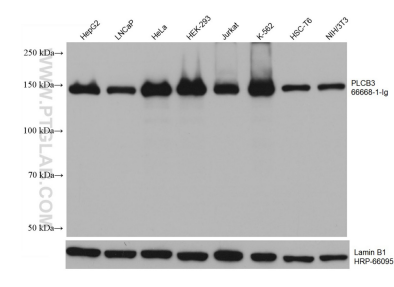
PLCB3 is a member of the phosphoinositide phospholipase C beta enzyme family that catalyze the production of the secondary messengers diacylglycerol and inositol 1,4,5-triphosphate from phosphatidylinositol in G-protein-linked receptor-mediated signal transduction. Six subfamilies of PLCs (B, G, D, E, Z and H) constitute part of ubiquitous signaling cascades that translate hormonal signals into intracellular events, leading to alternations in cell function. PLCB isoforms 1-4 are stimulated by G-protein activation ($G_{\alpha q/11}$ and/or $G_{\beta \gamma}$). Independent of its enzymatic activity, PLCB3 inhibits the proliferation of hematopoietic stem cells (HSCs) and myeloid cells.

Storage

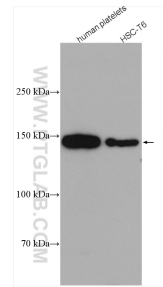
Storage:
Store at -80°C.
The product is shipped with ice packs. Upon receipt, store it immediately at -80°C

Storage Buffer:
PBS Only

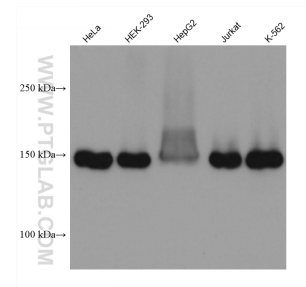
Selected Validation Data



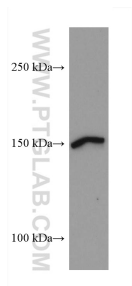
Various lysates were subjected to SDS PAGE followed by western blot with 66668-1-Ig (PLCB3 antibody) at dilution of 1:10000 incubated at room temperature for 1.5 hours. The membrane was stripped and reblotted with HRP-conjugated Lamin B1 Monoclonal antibody (HRP-66095) as loading control. This data was developed using the same antibody clone with 66668-1-PBS in a different storage buffer formulation.



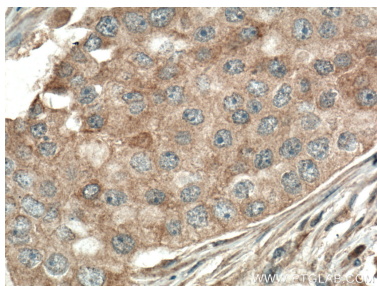
Various lysates were subjected to SDS PAGE followed by western blot with 66668-1-Ig (PLCB3 antibody) at dilution of 1:2000 incubated at room temperature for 1.5 hours. This data was developed using the same antibody clone with 66668-1-PBS in a different storage buffer formulation.



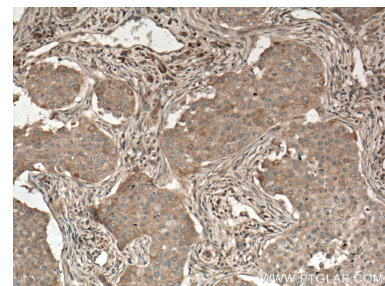
Various lysates were subjected to SDS PAGE followed by western blot with 66668-1-Ig (PLCB3 antibody) at dilution of 1:2500 incubated at room temperature for 1.5 hours. This data was developed using the same antibody clone with 66668-1-PBS in a different storage buffer formulation.



Sp2/0 cells were subjected to SDS PAGE followed by western blot with 66668-1-Ig (PLCB3 antibody) at dilution of 1:2500 incubated at room temperature for 1.5 hours. This data was developed using the same antibody clone with 66668-1-PBS in a different storage buffer formulation.



Immunohistochemical analysis of paraffin-embedded human breast cancer tissue slide using 66668-1-Ig (PLCB3 antibody) at dilution of 1:200 (under 10x lens. Heat mediated antigen retrieval with Tris-EDTA buffer (pH 9.0). This data was developed using the same antibody clone with 66668-1-PBS in a different storage buffer formulation.



Immunohistochemical analysis of paraffin-embedded human breast cancer tissue slide using 66668-1-Ig (PLCB3 antibody) at dilution of 1:200 (under 40x lens. Heat mediated antigen retrieval with Tris-EDTA buffer (pH 9.0). This data was developed using the same antibody clone with 66668-1-PBS in a different storage buffer formulation.