

For Research Use Only

GOLGA2/GM130 Monoclonal antibody, PBS Only (Capture)

Catalog Number: 66662-1-PBS

Featured Product



Basic Information

Catalog Number:

66662-1-PBS

Concentration:

1mg/ml

Source:

Mouse

Isotype:

IgG1

Immunogen Catalog Number:

AG1848

GenBank Accession Number:

BC014188

GeneID (NCBI):

2801

UNIPROT ID:

Q08379

Full Name:

golgi autoantigen, golgin subfamily
a, 2

Calculated MW:

111 kDa

Observed MW:

130 kDa

Purification Method:

Protein A purification

CloneNo.:

2A4F11

Applications

Tested Applications:

WB, IF/ICC, Cytometric bead array, Indirect ELISA

Species Specificity:

human, rat

Background Information

GOLGA2, also known as GM130, is a 130 kDa cis-Golgi matrix protein which is one component of the detergent and salt resistant Golgi matrix. It is a peripheral membrane protein highly bound to Golgi membrane and localized mainly at the cytoplasmic face of cis-Golgi membrane. Together with its interacting partner proteins, including p115, giantin, GRASP65, and Rab GTPase, GOLGA2/GM130 is involved in the regulation of ER-to-Golgi transport and also in the maintenance of the Golgi structure. Emerging evidence suggest that the GOLGA2/GM130 has potential roles in the control of glycosylation, cell cycle progression, and higher order cell functions such as cell polarization and directed cell migration. (PMID: 20197635)

Storage

Storage:

Store at -80°C.

The product is shipped with ice packs. Upon receipt, store it immediately at -80°C

Storage Buffer:

PBS Only

For technical support and original validation data for this product please contact:

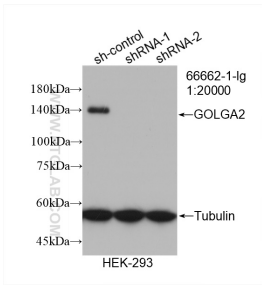
T: 4006900926

E: Proteintech-CN@ptglab.com

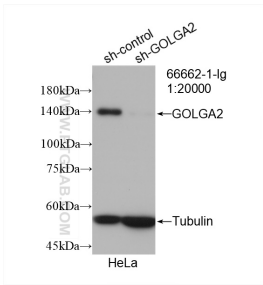
W: ptgcn.com

This product is exclusively available under Proteintech Group brand and is not available to purchase from any other manufacturer.

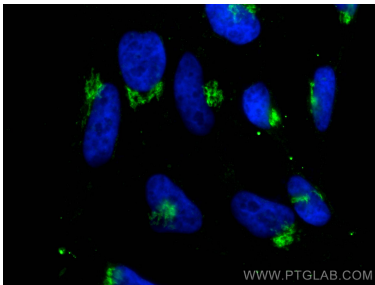
Selected Validation Data



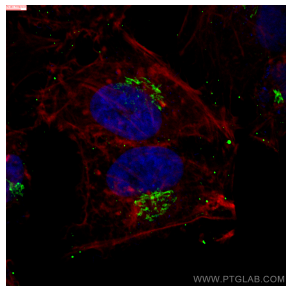
WB result of GOLGA2/GM130 antibody (66662-1-Ig; 1:20000; incubated at room temperature for 1.5 hours) with sh-Control and sh-GOLGA2/GM130 transfected HEK-293 cells. This data was developed using the same antibody clone with 66662-1-PBS in a different storage buffer formulation.



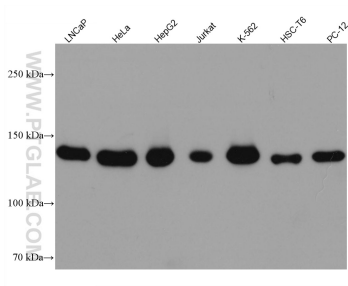
WB result of GOLGA2/GM130 antibody (66662-1-Ig; 1:20000; incubated at room temperature for 1.5 hours) with sh-Control and sh-GOLGA2/GM130 transfected HeLa cells. This data was developed using the same antibody clone with 66662-1-PBS in a different storage buffer formulation.



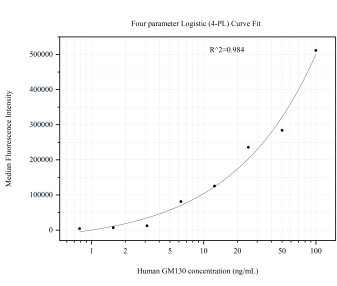
Immunofluorescent analysis of (4% PFA) fixed HeLa cells using GOLGA2/GM130 antibody (66662-1-Ig, Clone: 2A4F11) at dilution of 1:1000 and CoraLite®488-Conjugated AffiniPure Goat Anti-Mouse IgG(H+L). This data was developed using the same antibody clone with 66662-1-PBS in a different storage buffer formulation.



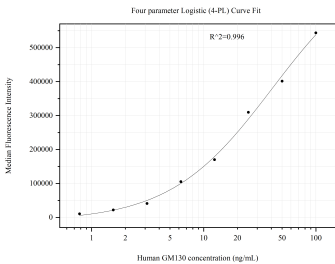
Immunofluorescent analysis of (4% PFA) fixed HeLa cells using GOLGA2/GM130 antibody (66662-1-Ig, Clone: 2A4F11) at dilution of 1:800 and CoraLite®488-Conjugated Goat Anti-Mouse IgG(H+L) (SA00013-1), CL594-Phalloidin (red). This data was developed using the same antibody clone with 66662-1-PBS in a different storage buffer formulation.



Various lysates were subjected to SDS PAGE followed by western blot with 66662-1-Ig (GOLGA2/GM130 antibody) at dilution of 1:10000 incubated at room temperature for 1.5 hours. This data was developed using the same antibody clone with 66662-1-PBS in a different storage buffer formulation.



Cytometric bead array standard curve of MP51313-1, GM130; GOLGA2 Monoclonal Matched Antibody Pair, PBS Only. Capture antibody: 66662-1-PBS. Detection antibody: 66662-3-PBS. Standard: Ag1848. Range: 0.781-100 ng/mL.



Cytometric bead array standard curve of MP51313-2, GM130; GOLGA2 Monoclonal Matched Antibody Pair, PBS Only. Capture antibody: 66662-1-PBS. Detection antibody: 66662-3-PBS. Standard: Ag1848. Range: 0.781-100 ng/mL.