

For Research Use Only

# GOLGA2/GM130 Monoclonal antibody



Catalog Number: 66662-1-Ig

Featured Product

6 Publications

## Basic Information

Catalog Number:

66662-1-Ig

Size:

1000  $\mu$ g/ml

Source:

Mouse

Isotype:

IgG1

Immunogen Catalog Number:

AG1848

GenBank Accession Number:

BC014188

GeneID (NCBI):

2801

UNIPROT ID:

Q08379

Full Name:

golgi autoantigen, golgin subfamily a, 2

Calculated MW:

111 kDa

Observed MW:

130 kDa

Purification Method:

Protein G purification

CloneNo.:

2A4F11

Recommended Dilutions:

WB 1:5000-1:50000

IF 1:500-1:2000

## Applications

Tested Applications:

IF/ICC, WB, ELISA

Cited Applications:

WB

Species Specificity:

Human, Rat

Cited Species:

human, rat

Positive Controls:

WB : LNCaP cells, HEK-293 cells, HeLa cells, HepG2 cells, Jurkat cells, HSC-T6 cells, K-562 cells, PC-12 cells

IF : HeLa cells,

## Background Information

GOLGA2, also known as GM130, is a 130 kDa cis-Golgi matrix protein which is one component of the detergent and salt resistant Golgi matrix. It is a peripheral membrane protein highly bound to Golgi membrane and localized mainly at the cytoplasmic face of cis-Golgi membrane. Together with its interacting partner proteins, including p115, giantin, GRASP65, and Rab GTPase, GOLGA2/GM130 is involved in the regulation of ER-to-Golgi transport and also in the maintenance of the Golgi structure. Emerging evidence suggest that the GOLGA2/GM130 has potential roles in the control of glycosylation, cell cycle progression, and higher order cell functions such as cell polarization and directed cell migration. (PMID: 20197635)

## Notable Publications

Author	Pubmed ID	Journal	Application
Xiaoliang Tan	36136987	Anticancer Drugs	WB
Nan Zhou	35174212	Front Mol Biosci	WB
Han Zeng	34974159	Mol Metab	WB

## Storage

Storage:

Store at -20°C. Stable for one year after shipment.

Storage Buffer:

PBS with 0.02% sodium azide and 50% glycerol pH 7.3.

Aliquoting is unnecessary for -20°C storage

For technical support and original validation data for this product please contact:

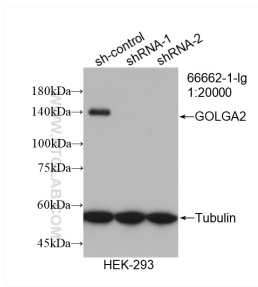
T: 4006900926

E: Proteintech-CN@ptglab.com

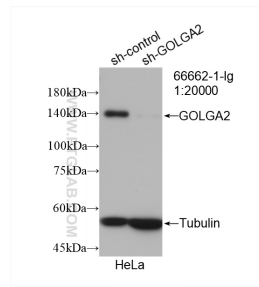
W: ptgcn.com

This product is exclusively available under Proteintech Group brand and is not available to purchase from any other manufacturer.

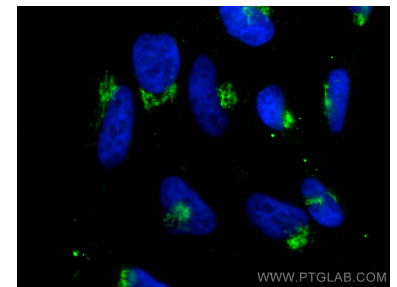
## Selected Validation Data



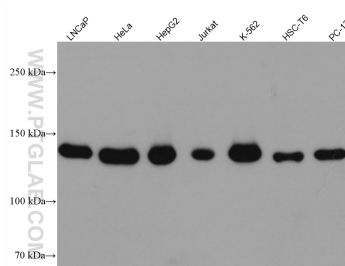
WB result of GOLGA2/GM130 antibody (66662-1-Ig; 1:20000; incubated at room temperature for 1.5 hours) with sh-Control and sh-GOLGA2/GM130 transfected HEK-293 cells.



WB result of GOLGA2/GM130 antibody (66662-1-Ig; 1:20000; incubated at room temperature for 1.5 hours) with sh-Control and sh-GOLGA2/GM130 transfected HeLa cells.



Immunofluorescent analysis of (4% PFA) fixed HeLa cells using GOLGA2/GM130 antibody (66662-1-Ig, Clone: 2A4F11) at dilution of 1:1000 and CoraLite®488-Conjugated AffiniPure Goat Anti-Mouse IgG(H+L).



Various lysates were subjected to SDS PAGE followed by western blot with 66662-1-Ig (GOLGA2/GM130 antibody) at dilution of 1:10000 incubated at room temperature for 1.5 hours.