

For Research Use Only

MYD88 Monoclonal antibody

Catalog Number: 66660-1-Ig **8 Publications**



Basic Information

Catalog Number:

66660-1-Ig

Size:

1000 µg/ml

Source:

Mouse

Isotype:

IgG1

Immunogen Catalog Number:

AG19770

GenBank Accession Number:

BC013589

GeneID (NCBI):

4615

UNIPROT ID:

Q99836

Full Name:

myeloid differentiation primary response gene (88)

Calculated MW:

33 kDa

Observed MW:

33-36 kDa

Purification Method:

Protein A purification

CloneNo.:

1B10E12

Recommended Dilutions:

WB 1:2000-1:10000

Applications

Tested Applications:

WB, ELISA

Cited Applications:

IHC, WB

Species Specificity:

Human, rat, mouse

Cited Species:

human, mouse

Positive Controls:

WB : HSC-T6 cells, HepG2 cells, PC-12 cells, NIH/3T3 cells, 4T1 cells, SP2/O cells

Background Information

MYD88 is a cytosolic adaptor protein that plays a central role in the innate and adaptive immune response. MYD88 is the key adaptor protein for the interleukin-1 receptor (IL-1R) and most Toll-like receptors (TLRs), which are essential for innate immunity and pathogen-associated molecular pattern recognition. Mutations in the MyD88 gene lead to the development of cancer in humans and mice suggesting that MyD88 also plays a cell autonomous role in tissue homeostasis.

Notable Publications

Author	Pubmed ID	Journal	Application
Pengwei Luan	32898527	Life Sci	WB
Huiqing Zhang	33860064	J Immunol Res	WB
Lixian Jiang	33606516	ACS Nano	WB

Storage

Storage:

Store at -20°C. Stable for one year after shipment.

Storage Buffer:

PBS with 0.02% sodium azide and 50% glycerol pH 7.3.

Aliquoting is unnecessary for -20°C storage

For technical support and original validation data for this product please contact:

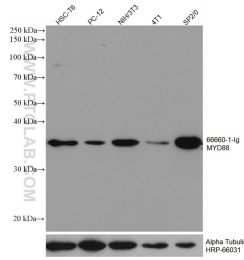
T: 4006900926

E: Proteintech-CN@ptglab.com

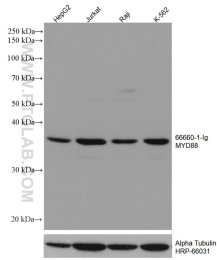
W: ptgcn.com

This product is exclusively available under Proteintech Group brand and is not available to purchase from any other manufacturer.

Selected Validation Data



Various lysates were subjected to SDS PAGE followed by western blot with 66660-1-Ig (MYD88 antibody) at dilution of 1:5000 incubated at room temperature for 1.5 hours. The membrane was stripped and reblotted with HRP-conjugated Alpha Tubulin Monoclonal antibody (HRP-66031) as loading control.



Various lysates were subjected to SDS PAGE followed by western blot with 66660-1-Ig (MYD88 antibody) at dilution of 1:5000 incubated at room temperature for 1.5 hours. The membrane was stripped and reblotted with HRP-conjugated Alpha Tubulin Monoclonal antibody (HRP-66031) as loading control.