

For Research Use Only

TOMM40 Monoclonal antibody

Catalog Number: 66658-1-Ig

Featured Product

7 Publications



Basic Information

Catalog Number:

66658-1-Ig

Size:

1900 µg/ml

Source:

Mouse

Isotype:

IgG1

Immunogen Catalog Number:

AG13065

GenBank Accession Number:

BC017224

GeneID (NCBI):

10452

UNIPROT ID:

O96008

Full Name:

translocase of outer mitochondrial membrane 40 homolog (yeast)

Calculated MW:

38 kDa

Observed MW:

38 kDa

Purification Method:

Protein A purification

CloneNo.:

5E2C5

Recommended Dilutions:

WB 1:5000-1:50000

IF 1:50-1:500

Applications

Tested Applications:

IF/ICC, WB, ELISA

Cited Applications:

WB, IHC

Species Specificity:

Human, Mouse, Rat, Pig

Cited Species:

human, rat, mouse

Positive Controls:

WB: LNCaP cells, HeLa cells, HEK-293 cells, HepG2 cells, human brain tissue, pig brain tissue, Jurkat cells, HSC-T6 cells, PC-12 cells, NIH/3T3 cells, RAW264.7 cells, K-562 cells, rat brain tissue, mouse brain tissue

IF: HepG2 cells, HeLa cells

Background Information

Notable Publications

| Author | Pubmed ID | Journal | Application |
|------------|-----------|---------------|-------------|
| Xuan Su | 30431067 | Int J Mol Med | WB, IHC |
| Lilian Phu | 32142684 | Mol Cell | WB |
| Yi Zhu | 31993850 | Apoptosis | WB |

Storage

Storage:

Store at -20°C. Stable for one year after shipment.

Storage Buffer:

PBS with 0.02% sodium azide and 50% glycerol pH 7.3.

Aliquoting is unnecessary for -20°C storage

For technical support and original validation data for this product please contact:

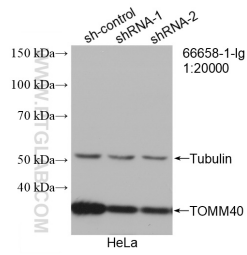
T: 4006900926

E: Proteintech-CN@ptglab.com

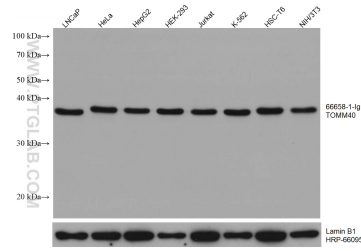
W: ptgcn.com

This product is exclusively available under Proteintech Group brand and is not available to purchase from any other manufacturer.

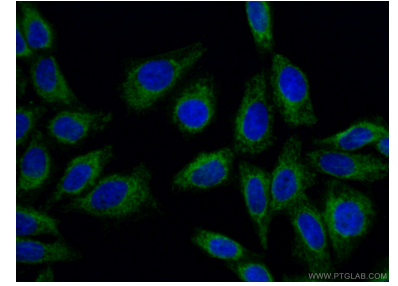
Selected Validation Data



WB result of TOMM40 antibody (66658-1-Ig; 1:20000; incubated at room temperature for 1.5 hours) with sh-Control and sh-TOMM40 transfected HeLa cells.



Various lysates were subjected to SDS PAGE followed by western blot with 66658-1-Ig (TOMM40 antibody) at dilution of 1:20000 incubated at room temperature for 1.5 hours. The membrane was stripped and reblotted with HRP-conjugated Lamin B1 Monoclonal antibody (HRP-66095) as loading control.



Immunofluorescent analysis of (4% PFA) fixed HepG2 cells using 66658-1-Ig (TOMM40 antibody) at dilution of 1:100 and CoraLite488-Conjugated AffiniPure Goat Anti-Mouse IgG(H+L).