

For Research Use Only

# XRCC2 Monoclonal antibody, PBS Only



Catalog Number: 66652-1-PBS

## Basic Information

Catalog Number: 66652-1-PBS	GenBank Accession Number: BC042137	Purification Method: Protein A purification
Size: 1mg/ml	GeneID (NCBI): 7516	CloneNo.: 3D9A1
Source: Mouse	UNIPROT ID: O43543	
Isotype: IgG2b	Full Name: X-ray repair complementing defective repair in Chinese hamster cells 2	
Immunogen Catalog Number: AG14421	Calculated MW: 280 aa, 32 kDa	
	Observed MW: 32 kDa	

## Applications

Tested Applications:  
ELISA, IF/ICC, WB

Species Specificity:  
mouse, human

## Background Information

XRCC2, also named as DNA repair protein XRCC2, is a 280 amino acid protein, which belongs to the RecA family. XRCC2 is involved in the homologous recombination repair (HRR) pathway of double-stranded DNA, thought to repair chromosomal fragmentation, translocations and deletions. XRCC2 is a part of the Rad21 paralog protein complex BCDX2 which acts in the BRCA1-BRCA2-dependent HR pathway.

## Storage

Storage:  
Store at -80°C.

The product is shipped with ice packs. Upon receipt, store it immediately at -80°C

Storage Buffer:  
PBS Only

For technical support and original validation data for this product please contact:

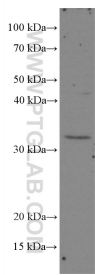
T: 4006900926

E: [Proteintech-CN@ptglab.com](mailto:Proteintech-CN@ptglab.com)

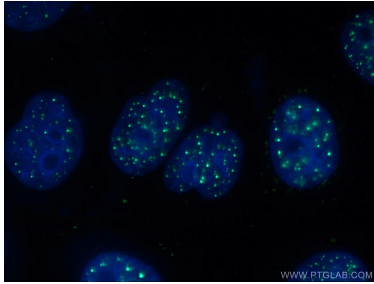
W: [ptgcn.com](http://ptgcn.com)

This product is exclusively available under Proteintech Group brand and is not available to purchase from any other manufacturer.

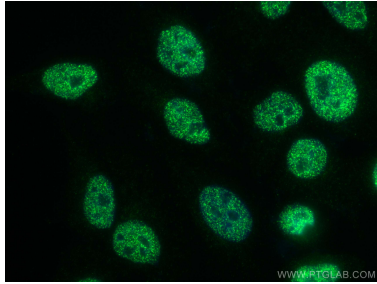
Selected Validation Data



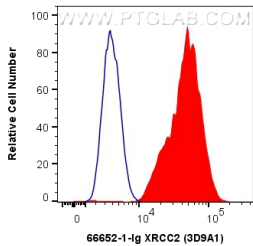
HEK-293 cells were subjected to SDS PAGE followed by western blot with 66652-1-Ig (XRCC2 antibody) at dilution of 1:2000 incubated at room temperature for 1.5 hours. This data was developed using the same antibody clone with 66652-1-PBS in a different storage buffer formulation.



Immunofluorescent analysis of (-20°C Ethanol) fixed HepG2 cells using 66652-1-Ig (XRCC2 antibody) at dilution of 1:100 and Alexa Fluor 488-Conjugated AffiniPure Goat Anti-Mouse IgG(H+L). This data was developed using the same antibody clone with 66652-1-PBS in a different storage buffer formulation.



Immunofluorescent analysis of (4% PFA) fixed HepG2 cells using XRCC2 antibody (66652-1-Ig, Clone: 3D9A1 ) at dilution of 1:400 and CoraLite®488-Conjugated AffiniPure Goat Anti-Mouse IgG(H+L). This data was developed using the same antibody clone with 66652-1-PBS in a different storage buffer formulation.



1X10<sup>6</sup> HepG2 cells were intracellularly stained with 0.4 ug Anti-Human XRCC2 (66652-1-Ig, Clone:3D9A1) and CoraLite®488-Conjugated AffiniPure Goat Anti-Mouse IgG(H+L) at dilution 1:1000 (red), or 0.4 ug Mouse IgG2b Isotype Control (MPC-11) (65128-1-Ig, Clone: MPC-11) (blue). Cells were fixed and permeabilized with Transcription Factor Staining Buffer Kit (PF00011). This data was developed using the same antibody clone with 66652-1-PBS in a different storage buffer

