

XRCC2 Monoclonal antibody

Catalog Number: 66652-1-Ig

Basic Information

Catalog Number:

66652-1-Ig

Size:

2000 µg/ml

Source:

Mouse

Isotype:

IgG2b

Immunogen Catalog Number:

AG14421

GenBank Accession Number:

BC042137

GeneID (NCBI):

7516

UNIPROT ID:

O43543

Full Name:

X-ray repair complementing defective repair in Chinese hamster cells 2

Calculated MW:

280 aa, 32 kDa

Observed MW:

32 kDa

Purification Method:

Protein A purification

CloneNo.:

3D9A1

Recommended Dilutions:

WB 1:1000-1:4000

IF/ICC 1:50-1:500

Applications

Tested Applications:

WB, IF/ICC, FC (Intra), ELISA

Species Specificity:

human, mouse

Positive Controls:

WB : HEK-293 cells, Raji cells, NIH/3T3 cells

IF/ICC : HepG2 cells,

Background Information

XRCC2, also named as DNA repair protein XRCC2, is a 280 amino acid protein, which belongs to the RecA family. XRCC2 is involved in the homologous recombination repair (HRR) pathway of double-stranded DNA, thought to repair chromosomal fragmentation, translocations and deletions. XRCC2 is a part of the Rad21 paralog protein complex BCDX2 which acts in the BRCA1-BRCA2-dependent HR pathway.

Storage

Storage:

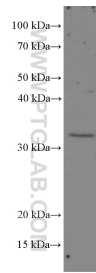
Store at -20°C. Stable for one year after shipment.

Storage Buffer:

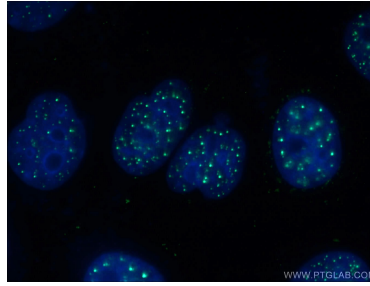
PBS with 0.02% sodium azide and 50% glycerol pH 7.3.

Aliquoting is unnecessary for -20°C storage

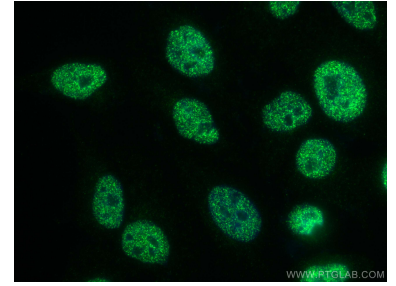
Selected Validation Data



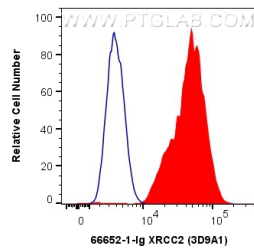
HEK-293 cells were subjected to SDS PAGE followed by western blot with 66652-1-Ig (XRC2 antibody) at dilution of 1:2000 incubated at room temperature for 1.5 hours.



Immunofluorescent analysis of (-20°C Ethanol) fixed HepG2 cells using 66652-1-Ig (XRC2 antibody) at dilution of 1:100 and Alexa Fluor 488-Conjugated AffiniPure Goat Anti-Mouse IgG(H+L).



Immunofluorescent analysis of (4% PFA) fixed HepG2 cells using XRC2 antibody (66652-1-Ig, Clone: 3D9A1) at dilution of 1:400 and CoraLite®488-Conjugated AffiniPure Goat Anti-Mouse IgG(H+L).



1X10⁶ HepG2 cells were intracellularly stained with 0.4 ug Anti-Human XRC2 (66652-1-Ig, Clone:3D9A1) and CoraLite®488-Conjugated AffiniPure Goat Anti-Mouse IgG(H+L) at dilution 1:1000 (red), or 0.4 ug Mouse IgG2b Isotype Control (MPC-11) (65128-1-Ig, Clone: MPC-11) (blue). Cells were fixed and permeabilized with Transcription Factor Staining Buffer Kit (PF00011).