

For Research Use Only

GRASP65, GORASP1 Monoclonal antibody

Catalog Number: 66651-1-Ig 4 Publications



Basic Information

Catalog Number: 66651-1-Ig	GenBank Accession Number: BC008928	Purification Method: Protein A purification
Concentration: 1000 ug/ml	GeneID (NCBI): 64689	CloneNo.: 1B2C10
Source: Mouse	UNIPROT ID: Q9BQQ3	Recommended Dilutions: WB 1:1000-1:8000 IHC 1:200-1:800 IF/ICC 1:1938-1:7752
Isotype: IgG1	Full Name: golgi reassembly stacking protein 1, 65kDa	
Immunogen Catalog Number: AG1054	Calculated MW: 46 kDa	
	Observed MW: 65-70 kDa	

Applications

Tested Applications: WB, IHC, IF/ICC, ELISA	Positive Controls:
Cited Applications: WB	WB : HeLa cells, HSC-T6 cells, HEK-293 cells, MCF-7 cells, Jurkat cells
Species Specificity: human, mouse, rat	IHC : human prostate cancer tissue, human stomach cancer tissue
Cited Species: human	IF/ICC : SK-BR-3 cells,
Note-IHC: suggested antigen retrieval with TE buffer pH 9.0; (*) Alternatively, antigen retrieval may be performed with citrate buffer pH 6.0	

Background Information

Golgi reassembly-stacking protein 1 is a protein that in humans is encoded by the GORASP1 gene. The Golgi complex plays a key role in the sorting and modification of proteins exported from the endoplasmic reticulum.

Notable Publications

Author	Pubmed ID	Journal	Application
Stephen C Ireland	32583744	Mol Biol Cell	WB
Shuai Li	34239872	Front Cell Dev Biol	WB
Guang Ji	31264250	J Cell Biochem	WB

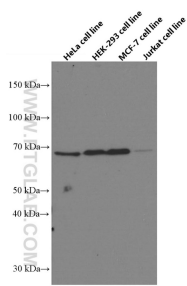
Storage

Storage:
Store at -20°C. Stable for one year after shipment.
Storage Buffer:
PBS with 0.02% sodium azide and 50% glycerol, pH7.3
Aliquoting is unnecessary for -20°C storage

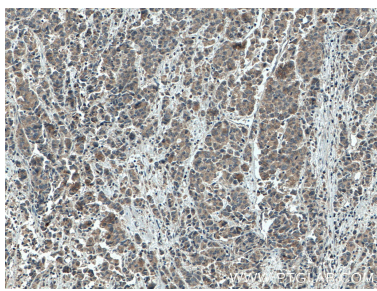
For technical support and original validation data for this product please contact:
T: 4006900926 E: Proteintech-CN@ptglab.com W: ptgcn.com

This product is exclusively available under Proteintech Group brand and is not available to purchase from any other manufacturer.

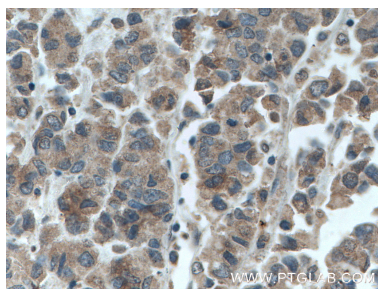
Selected Validation Data



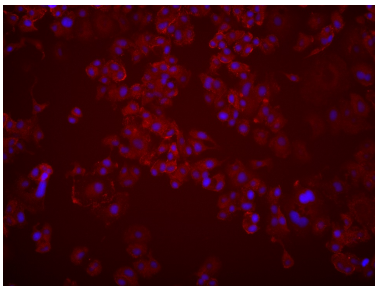
Various lysates were subjected to SDS PAGE followed by western blot with 66651-1-Ig (GRASP65,GORASP1 antibody) at dilution of 1:4000 incubated at room temperature for 1.5 hours.



Immunohistochemical analysis of paraffin-embedded human prostate cancer tissue slide using 66651-1-Ig (GRASP65,GORASP1 antibody) at dilution of 1:400 (under 10x lens. Heat mediated antigen retrieval with Tris-EDTA buffer (pH 9.0).



Immunohistochemical analysis of paraffin-embedded human prostate cancer tissue slide using 66651-1-Ig (GRASP65,GORASP1 antibody) at dilution of 1:400 (under 40x lens. Heat mediated antigen retrieval with Tris-EDTA buffer (pH 9.0).



Immunofluorescent analysis of (4% PFA) fixed SK-BR-3 cells using GRASP65,GORASP1 antibody (66651-1-Ig, Clone: 1B2C10) at dilution of 1:3876 and Multi-rAb CoraLite® Plus 594-Goat Anti-Mouse Recombinant Secondary Antibody (H+L) (Cat.NO. RGAM004).