

For Research Use Only

# ANLN Monoclonal antibody, PBS Only

Catalog Number: 66643-1-PBS

Featured Product



## Basic Information

Catalog Number:

66643-1-PBS

Size:

1 mg/ml

Source:

Mouse

Isotype:

IgG1

Immunogen Catalog Number:

AG19294

GenBank Accession Number:

BC034692

GeneID (NCBI):

54443

UNIPROT ID:

Q9NQW6

Full Name:

anillin, actin binding protein

Calculated MW:

1124 aa, 124 kDa

Observed MW:

110 kDa~120 kDa

Purification Method:

Protein G purification

CloneNo.:

1B4A8

## Applications

Tested Applications:

WB, IF/ICC, ELISA

Species Specificity:

human, mouse, rat

## Background Information

Anillin, an actin-binding protein, is a conserved cleavage furrow component important for cytokinesis. The human anillin protein localizes to the nucleus during interphase, the cortex following nuclear envelope breakdown, and the cleavage furrow during cytokinesis. It interacts with at least two other furrow proteins, actin and the septins through its C-terminal PH domain and N-terminal actin-binding domain. In anillin knockdown cells, the cleavage furrow ingressed but failed to complete the ingression. Anillin has been found to be overexpressed in tumors and may serve as promising marker for pancreatic carcinoma molecular diagnostics as well as a prognostic indicator for non-small cell lung cancers.

## Storage

Storage:

Store at -80°C.

The product is shipped with ice packs. Upon receipt, store it immediately at -80°C

Storage Buffer:

PBS Only

For technical support and original validation data for this product please contact:

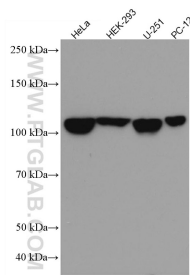
T: 4006900926

E: [Proteintech-CN@ptglab.com](mailto:Proteintech-CN@ptglab.com)

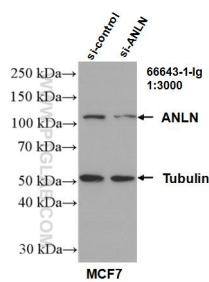
W: [ptgcn.com](http://ptgcn.com)

This product is exclusively available under Proteintech Group brand and is not available to purchase from any other manufacturer.

Selected Validation Data



Various lysates were subjected to SDS PAGE followed by western blot with 66643-1-Ig (ANLN antibody) at dilution of 1:5000 incubated at room temperature for 1.5 hours. This data was developed using the same antibody clone with 66643-1-PBS in a different storage buffer formulation.



WB result of ANLN antibody (66643-1-Ig: 1:3000; incubated at room temperature for 1.5 hours) with sh-Control and sh-ANLN transfected MCF-7 cells. This data was developed using the same antibody clone with 66643-1-PBS in a different storage buffer formulation.

Immunofluorescent analysis of (4% PFA) fixed A431 cells using ANLN antibody (66643-1-Ig, Clone: 1B4A8 ) at dilution of 1:1000 and CoraLite®488-Conjugated AffiniPure Goat Anti-Mouse IgG(H+L) (SA00013-1), CL594-phalloidin (red). This data was developed using the same antibody clone with 66643-1-PBS in a different storage buffer formulation.