

ANGPTL8/Betatrophin Monoclonal antibody

Catalog Number: 66641-1-Ig

1 Publications

Basic Information

Catalog Number:

66641-1-Ig

Size:

1500 µg/ml

Source:

Mouse

Isotype:

IgG1

Immunogen Catalog Number:

AG20708

GenBank Accession Number:

BC146552

GeneID (NCBI):

55908

UNIPROT ID:

Q6UXH0

Full Name:

hepatocellular carcinoma-associated gene TD26

Calculated MW:

251 aa, 28 kDa

Observed MW:

22 kDa

Purification Method:

Protein A purification

CloneNo.:

2H9F9

Recommended Dilutions:

WB 1:1000-1:8000

IHC 1:200-1:800

IF-P 1:200-1:800

Applications

Tested Applications:

IF-P, IHC, WB, ELISA

Cited Applications:

WB

Species Specificity:

Human

Cited Species:

human

Note-IHC: suggested antigen retrieval with TE buffer pH 9.0; (*) Alternatively, antigen retrieval may be performed with citrate buffer pH 6.0

Positive Controls:

WB : human adipose tissue,

IHC : human liver tissue, human liver cancer tissue

IF-P : human liver tissue,

Background Information

Notable Publications

Author	Pubmed ID	Journal	Application
Shuoshuo Li	33555034	Br J Pharmacol	WB

Storage

Storage:

Store at -20°C. Stable for one year after shipment.

Storage Buffer:

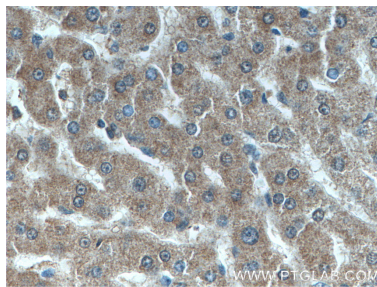
PBS with 0.02% sodium azide and 50% glycerol pH 7.3.

Aliquoting is unnecessary for -20°C storage

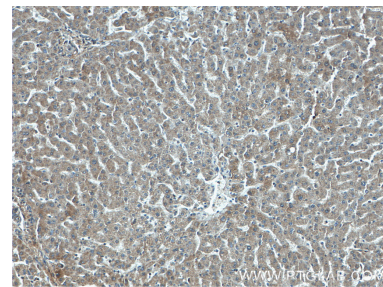
Selected Validation Data



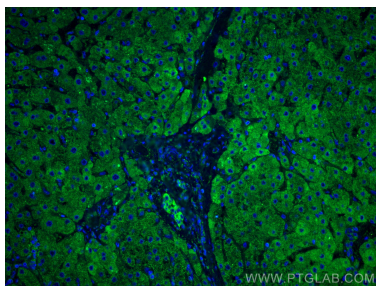
human adipose tissue were subjected to SDS PAGE followed by western blot with 66641-1-Ig (ANGPTL8/Betatrophin antibody) at dilution of 1:4000 incubated at room temperature for 1.5 hours.



Immunohistochemical analysis of paraffin-embedded human liver tissue slide using 66641-1-Ig (ANGPTL8/Betatrophin antibody) at dilution of 1:400 (under 40x lens).



Immunohistochemical analysis of paraffin-embedded human liver tissue slide using 66641-1-Ig (ANGPTL8/Betatrophin antibody) at dilution of 1:400 (under 10x lens).



Immunofluorescent analysis of (4% PFA) fixed human liver tissue using ANGPTL8/Betatrophin antibody (66641-1-Ig, Clone: 2H9F9) at dilution of 1:400 and CoraLite®488-Conjugated AffiniPure Goat Anti-Mouse IgG(H+L).