

For Research Use Only

FANCL Monoclonal antibody

Catalog Number: 66639-1-Ig

Featured Product

4 Publications



Basic Information

Catalog Number:

66639-1-Ig

Size:

3200 µg/ml

Source:

Mouse

Isotype:

IgG2a

Immunogen Catalog Number:

AG6192

GenBank Accession Number:

BC054517

GeneID (NCBI):

55120

UNIPROT ID:

Q9NW38

Full Name:

Fanconi anemia, complementation group L

Calculated MW:

43 kDa

Observed MW:

41-43 kDa

Purification Method:

Protein A purification

CloneNo.:

6E2B6

Recommended Dilutions:

WB 1:1000-1:3000

IF/ICC 1:400-1:1600

Applications

Tested Applications:

IF/ICC, WB, ELISA

Cited Applications:

WB

Species Specificity:

Human

Cited Species:

human, mouse

Positive Controls:

WB : HeLa cells, HEK-293 cells

IF/ICC : HeLa cells,

Background Information

Fanconi anemia (FA) is a hereditary bone marrow failure syndrome associated with developmental defects and cancer predisposition. The FA nuclear core complex consists of FANCA, B, C, E, F, G, L, and M. FANCL is a RING-type E3 ubiquitin ligase that monoubiquitinates FANCD2 and FANCI, a key functional role facilitated by other members of the nuclear core complex (PMID: 23783032). FANCL plays an important role in the repair of cisplatin-induced DNA damage (PMID: 26385482) and participates directly in support of stem cell function (PMID: 23783032). FANCL can be detected as 40-43 kDa (full-length) and ~28 kDa.

Notable Publications

Author	Pubmed ID	Journal	Application
Xinlin Xu	34117478	Nat Struct Mol Biol	WB
Wei Liu	39117659	Nat Commun	WB
Wendy Leung	38060446	Cell Rep	WB

Storage

Storage:

Store at -20°C. Stable for one year after shipment.

Storage Buffer:

PBS with 0.02% sodium azide and 50% glycerol pH 7.3.

Aliquoting is unnecessary for -20°C storage

For technical support and original validation data for this product please contact:

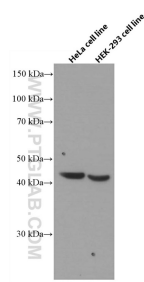
T: 4006900926

E: Proteintech-CN@ptglab.com

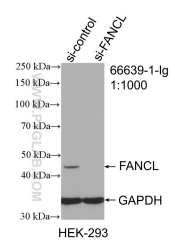
W: ptgcn.com

This product is exclusively available under Proteintech Group brand and is not available to purchase from any other manufacturer.

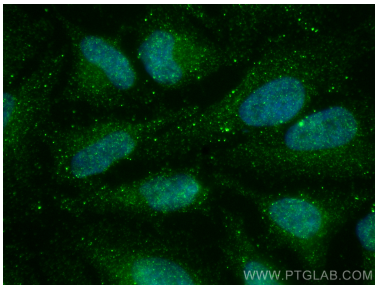
Selected Validation Data



HeLa cells and HEK-293 cells were subjected to SDS PAGE followed by western blot with 66639-1-Ig (FANCL antibody) at dilution of 1:2000 incubated at room temperature for 1.5 hours.



WB result of FANCL antibody (66639-1-Ig; 1:1000; incubated at room temperature for 1.5 hours) with sh-Control and sh-FANCL transfected HEK-293 cells.



Immunofluorescent analysis of (4% PFA) fixed HeLa cells using FANCL antibody (66639-1-Ig, Clone: 6E2B6) at dilution of 1:800 and CoraLite®488-Conjugated Goat Anti-Mouse IgG(H+L).