

For Research Use Only

# p70(S6K) Monoclonal antibody, PBS Only (Capture)

Catalog Number: 66638-1-PBS



## Basic Information

Catalog Number: 66638-1-PBS	GenBank Accession Number: BC053365	Purification Method: Protein G purification
Size: 1mg/ml	GeneID (NCBI): 6198	CloneNo.: 1D11C6
Source: Mouse	UNIPROT ID: P23443	
Isotype: IgG1	Full Name: ribosomal protein S6 kinase, 70kDa, polypeptide 1	
Immunogen Catalog Number: AG5883	Calculated MW: 59 kDa	
	Observed MW: 60-75 kDa	

## Applications

**Tested Applications:**  
WB, IHC, Cytometric bead array, Indirect ELISA

**Species Specificity:**  
human, mouse, rat

## Background Information

RPS6KB1 (Ribosomal protein S6 kinase beta-1) is also named as STK14A, p70 S6KA and belongs to the S6 kinase subfamily. RPS6KB1 is a major substrate of MTOR and acts as a crucial effector of MTOR signaling pathway. It plays a key role in cell growth and proliferation by regulating INS sensitivity, metabolism, protein synthesis, and cell cycle. RPS6KB1 may play an important role in the progression of HCC and could serve as a potential molecular target for HCC therapy (PMID:22684641). RPS6KB1 is a 70 kDa protein and has 5 isoforms with the calculated molecular mass of 51-59kDa produced by alternative initiation.

## Storage

**Storage:**  
Store at -80°C.  
**The product is shipped with ice packs. Upon receipt, store it immediately at -80°C**

**Storage Buffer:**  
PBS Only

For technical support and original validation data for this product please contact:

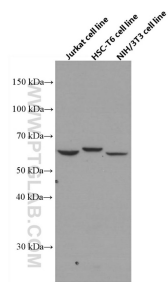
T: 4006900926

E: [Proteintech-CN@ptglab.com](mailto:Proteintech-CN@ptglab.com)

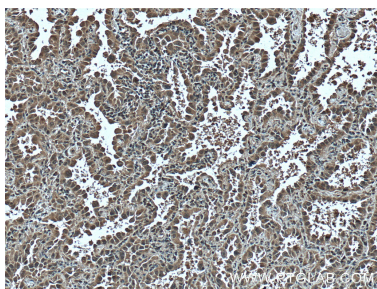
W: [ptgcn.com](http://ptgcn.com)

**This product is exclusively available under Proteintech Group brand and is not available to purchase from any other manufacturer.**

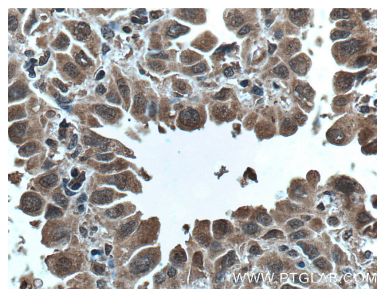
## Selected Validation Data



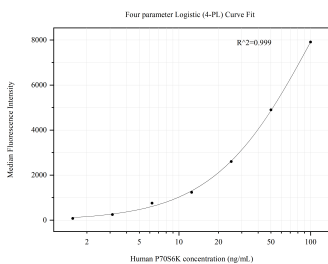
Various lysates were subjected to SDS PAGE followed by western blot with 66638-1-Ig (p70(S6K) antibody) at dilution of 1:3000 incubated at room temperature for 1.5 hours. This data was developed using the same antibody clone with 66638-1-PBS in a different storage buffer formulation.



Immunohistochemical analysis of paraffin-embedded human lung cancer tissue slide using 66638-1-Ig (p70(S6K) antibody) at dilution of 1:400 (under 10x lens). Heat mediated antigen retrieval with Tris-EDTA buffer (pH 9.0). This data was developed using the same antibody clone with 66638-1-PBS in a different storage buffer formulation.



Immunohistochemical analysis of paraffin-embedded human lung cancer tissue slide using 66638-1-Ig (p70(S6K) antibody) at dilution of 1:400 (under 40x lens). Heat mediated antigen retrieval with Tris-EDTA buffer (pH 9.0). This data was developed using the same antibody clone with 66638-1-PBS in a different storage buffer formulation.



Cytometric bead array standard curve of MP50673-1, p70(S6K) Monoclonal Matched Antibody Pair, PBS Only. Capture antibody: 66638-1-PBS. Detection antibody: 66638-2-PBS. Standard:Ag5883. Range: 1.563-100 ng/mL.