

For Research Use Only

# FIS1 Monoclonal antibody

Catalog Number: 66635-1-Ig **24 Publications**



## Basic Information

<b>Catalog Number:</b> 66635-1-Ig	<b>GenBank Accession Number:</b> BC009428	<b>Purification Method:</b> Protein G purification
<b>Concentration:</b> 1000 ug/ml	<b>GeneID (NCBI):</b> 51024	<b>CloneNo.:</b> 2F10E1
<b>Source:</b> Mouse	<b>UNIPROT ID:</b> Q9Y3D6	<b>Recommended Dilutions:</b> WB 1:5000-1:50000 IP 0.5-4.0 ug for 1.0-3.0 mg of total protein lysate IHC 1:250-1:1000 IF/ICC 1:200-1:800
<b>Isotype:</b> IgG1	<b>Full Name:</b> fission 1 (mitochondrial outer membrane) homolog (S. cerevisiae)	
<b>Immunogen Catalog Number:</b> AG1409	<b>Calculated MW:</b> 17 kDa	
	<b>Observed MW:</b> 15 kDa	

## Applications

<b>Tested Applications:</b> WB, IHC, IF/ICC, IP, ELISA	<b>Positive Controls:</b>
<b>Cited Applications:</b> WB, IHC, IF	<b>WB :</b> LNCaP cells, HEK-293 cells, HeLa cells, MCF-7 cells, Jurkat cells, HepG2 cells, K-562 cells
<b>Species Specificity:</b> human	<b>IP :</b> HeLa cells,
<b>Cited Species:</b> human, mouse, rat, pig, goat, fish	<b>IHC :</b> human breast cancer tissue, human prostate cancer tissue, human ovary tumor tissue
<b>Note-IHC: suggested antigen retrieval with TE buffer pH 9.0; (*) Alternatively, antigen retrieval may be performed with citrate buffer pH 6.0</b>	<b>IF/ICC :</b> HepG2 cells,

## Background Information

Fis1 (fission 1) is an integral mitochondrial outer membrane protein that participates in mitochondrial fission by interacting with dynamin-related protein 1 (Drp1). Excessive mitochondrial fission is associated with the pathology of a number of neurodegenerative or neurodevelopmental diseases. Increased expression of Fis1 has been found in Huntington's disease (HD)-affected brain, Alzheimer's disease (AD) patients, and autism spectrum disorder. (21257639, 21459773, 23333625)

## Notable Publications

Author	Pubmed ID	Journal	Application
YUE LI	34470980	Biol Pharm Bull	IF
Xiao-Lin Jiang	36309912	Aging (Albany NY)	WB
Yujie Zhong	36501024	Nutrients	WB

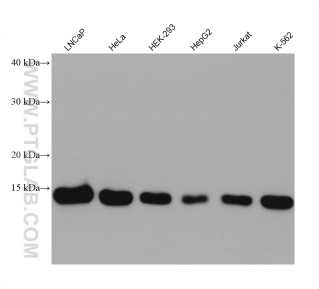
## Storage

**Storage:**  
Store at -20°C. Stable for one year after shipment.  
**Storage Buffer:**  
PBS with 0.02% sodium azide and 50% glycerol, pH7.3  
**Aliquoting is unnecessary for -20°C storage**

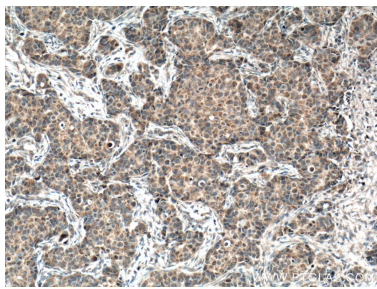
For technical support and original validation data for this product please contact:  
T: 4006900926 E: Proteintech-CN@ptglab.com W: ptgcn.com

**This product is exclusively available under Proteintech Group brand and is not available to purchase from any other manufacturer.**

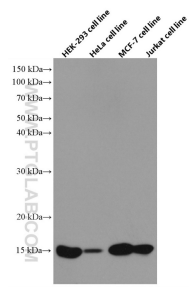
Selected Validation Data



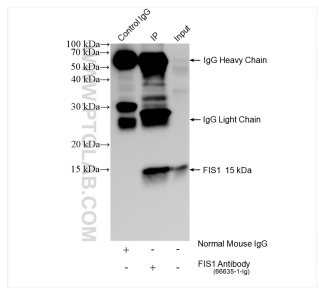
Various lysates were subjected to SDS PAGE followed by western blot with 66635-1-Ig (FIS1 antibody) at dilution of 1:10000 incubated at room temperature for 1.5 hours.



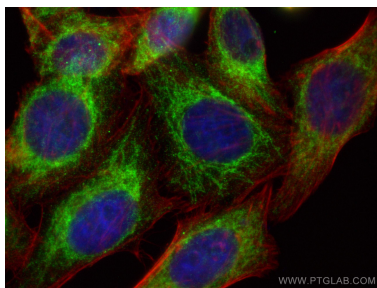
Immunohistochemical analysis of paraffin-embedded human breast cancer tissue slide using 66635-1-Ig (FIS1 antibody) at dilution of 1:500 (under 10x lens. Heat mediated antigen retrieval with Tris-EDTA buffer (pH 9.0)).



Various cells were subjected to SDS PAGE followed by western blot with 66635-1-Ig (FIS1 antibody) at dilution of 1:5000 incubated at room temperature for 1.5 hours.



IP result of anti-FIS1 (IP:66635-1-Ig, 4ug; Detection:66635-1-Ig 1:1000) with HeLa cells lysate 1120 ug.



Immunofluorescent analysis of (4% PFA) fixed HepG2 cells using FIS1 antibody (66635-1-Ig, Clone: 2F10E1 ) at dilution of 1:400 and Multi-rAb Coralite ® Plus 488-Goat Anti-Mouse Recombinant Secondary Antibody (H+L) (RGAM002), CL594-Phalloidin (red).