

For Research Use Only

C5 Monoclonal antibody

Catalog Number: 66634-1-Ig **3 Publications**



Basic Information

Catalog Number: 66634-1-Ig	GenBank Accession Number: BC113740	Purification Method: Protein A purification
Concentration: 1000 ug/ml	GeneID (NCBI): 727	CloneNo.: 2G8C9
Source: Mouse	UNIPROT ID: P01031	Recommended Dilutions: WB 1:5000-1:50000 IF/ICC 1:400-1:1600
Isotype: IgG2a	Full Name: complement component 5	
Immunogen Catalog Number: AG17882	Calculated MW: 1676 aa, 188 kDa	
	Observed MW: 115 kDa	

Applications

Tested Applications: WB, IF/ICC, FC (Intra), ELISA	Positive Controls: WB : human plasma tissue, rabbit serum IF/ICC : HepG2 cells,
Cited Applications: WB, ELISA	
Species Specificity: human	
Cited Species: human	

Background Information

The complement system is an important effector that bridges the innate and adaptive immune systems. The fifth component of complement, C5, is part of the complement cascade and plays an important role in inflammation and cell killing. It consists of disulfide-linked alpha and beta polypeptide chains but can be cleaved into two active peptides (C5a and C5b) by C5 convertases. Mutations and defects in C5 are associated with severe recurrent infections. (PMID: 20010915; PMID: 8011297; PMID: 6554279)

Notable Publications

Author	Pubmed ID	Journal	Application
Anne Kathrin Wessig	35296708	Sci Rep	WB
Sipeng Li	34265469	Mol Cell Proteomics	WB
Simin Deng	38170683	Virulence	ELISA

Storage

Storage:
Store at -20°C. Stable for one year after shipment.
Storage Buffer:
PBS with 0.02% sodium azide and 50% glycerol, pH7.3
Aliquoting is unnecessary for -20°C storage

For technical support and original validation data for this product please contact:

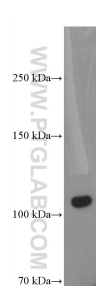
T: 4006900926

E: Proteintech-CN@ptglab.com

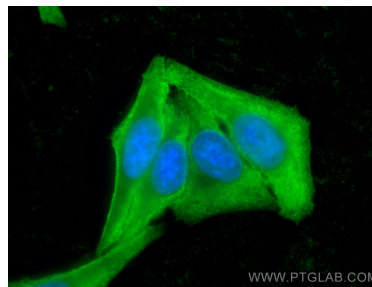
W: ptgcn.com

This product is exclusively available under Proteintech Group brand and is not available to purchase from any other manufacturer.

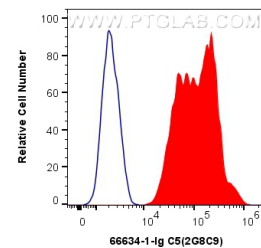
Selected Validation Data



human plasma were subjected to SDS PAGE followed by western blot with 66634-1-Ig (C5 antibody) at dilution of 1:10000 incubated at room temperature for 1.5 hours.



Immunofluorescent analysis of (-20°C Ethanol) fixed HepG2 cells using C5 antibody (66634-1-Ig, Clone: 2G8C9) at dilution of 1:800 and CoraLite®488-Conjugated Goat Anti-Mouse IgG(H+L) (SA00013-1).



1X10⁶ HepG2 cells were intracellularly stained with 0.4 ug Anti-Human C5 (66634-1-Ig, Clone:2G8C9) and CoraLite®488-Conjugated AffiniPure Goat Anti-Mouse IgG(H+L) at dilution 1:1000 (red), or 0.4 ug Mouse IgG2a Isotype Control (C1.18.4) (65208-1-Ig, Clone: C1.18.4) (blue). Cells were fixed with 4% PFA and permeabilized with Flow Cytometry Perm Buffer (PF00011-C).