

For Research Use Only

FAF2 Monoclonal antibody

Catalog Number: 66629-1-Ig **Featured Product**



Basic Information

Catalog Number:

66629-1-Ig

Size:

1700 µg/ml

Source:

Mouse

Isotype:

IgG1

Immunogen Catalog Number:

AG21536

GenBank Accession Number:

BC014001

GeneID (NCBI):

23197

UNIPROT ID:

Q96CS3

Full Name:

Fas associated factor family member

2

Calculated MW:

445 aa, 53 kDa

Observed MW:

51 kDa

Purification Method:

Protein G purification

CloneNo.:

3H6D2

Recommended Dilutions:

WB 1:2000-1:10000

IHC 1:250-1:1000

Applications

Tested Applications:

IHC, WB, ELISA

Species Specificity:

Human, mouse

Note-IHC: suggested antigen retrieval with TE buffer pH 9.0; (*) Alternatively, antigen retrieval may be performed with citrate buffer pH 6.0

Positive Controls:

WB : HeLa cells, HEK-293 cells, HepG2 cells

IHC : human breast cancer tissue, mouse brain tissue

Background Information

Protein ETEA (FAF2, or UBXD8) is a homolog to Fas-associated factor 1 (FAF1), which is involved in Fas-mediated apoptosis. ETEA protein directly interacts with and negatively regulates neurofibromin. ETEA contains both UBA and UBX domains and overexpression of ETEA downregulates neurofibromin in human cells. It may play a role in the translocation of terminally misfolded proteins from the endoplasmic reticulum lumen to the cytoplasm and their degradation by the proteasome. ETEA is highly expressed in peripheral blood of patients with atopic dermatitis (AD) compared to normal individuals, and may regulate the resistance to apoptosis that is observed in T cells and eosinophils of AD patients.

Storage

Storage:

Store at -20°C. Stable for one year after shipment.

Storage Buffer:

PBS with 0.02% sodium azide and 50% glycerol pH 7.3.

Aliquoting is unnecessary for -20°C storage

For technical support and original validation data for this product please contact:

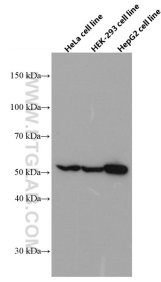
T: 4006900926

E: Proteintech-CN@ptglab.com

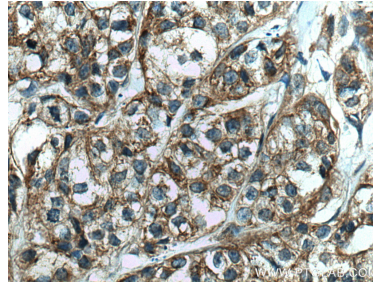
W: ptgcn.com

This product is exclusively available under Proteintech Group brand and is not available to purchase from any other manufacturer.

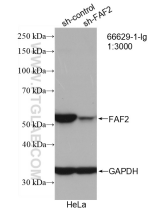
Selected Validation Data



HeLa cells were subjected to SDS PAGE followed by western blot with 66629-1-Ig (FAF2 antibody) at dilution of 1:5000 incubated at room temperature for 1.5 hours.



Immunohistochemical analysis of paraffin-embedded human breast cancer tissue slide using 66629-1-Ig (FAF2 antibody) at dilution of 1:500 (under 40x lens). Heat mediated antigen retrieval with Tris-EDTA buffer (pH 9.0).



WB result of FAF2 antibody (66629-1-Ig; 1:3000; incubated at room temperature for 1.5 hours) with sh-Control and sh-FAF2 transfected HeLa cells.