

# RABEPK/p40 Monoclonal antibody, PBS Only

Catalog Number: 66622-1-PBS

## Basic Information

<b>Catalog Number:</b> 66622-1-PBS	<b>GenBank Accession Number:</b> BC065725	<b>Purification Method:</b> Protein G purification
<b>Size:</b> 1mg/ml	<b>GeneID (NCBI):</b> 10244	<b>CloneNo.:</b> 1E11A3
<b>Source:</b> Mouse	<b>UNIPROT ID:</b> Q7Z6M1	
<b>Isotype:</b> IgG1	<b>Full Name:</b> Rab9 effector protein with kelch motifs	
<b>Immunogen Catalog Number:</b> AG7796	<b>Calculated MW:</b> 41 kDa	
	<b>Observed MW:</b> 40 kDa	

## Applications

**Tested Applications:**  
WB, IHC, IF/ICC, Indirect ELISA

**Species Specificity:**  
human, mouse, rat

## Background Information

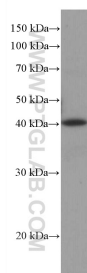
Rab9 GTPase is required for the transport of mannose 6-phosphate receptors from endosomes to the trans-Golgi network in living cells, and in an in vitro system that reconstitutes this process. P40 is an effector of Rab9 that interacts preferentially with the active form of Rab9. p40 does not interact with Rab7 or K-Ras; it also fails to bind Rab9 when it is bound to GDI. The protein is found in cytosol, yet a significant fraction (~30%) is associated with cellular membranes. P40 is a very potent transport factor in that the pure, recombinant protein can stimulate, significantly, an in vitro transport assay that measures transport of mannose 6-phosphate receptors from endosomes to the trans-Golgi network.

## Storage

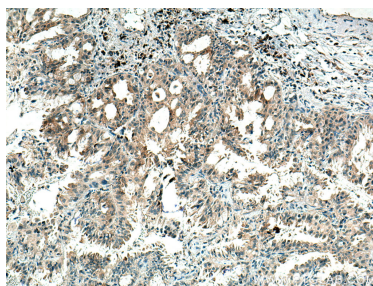
**Storage:**  
Store at -80°C.  
**The product is shipped with ice packs. Upon receipt, store it immediately at -80°C**

**Storage Buffer:**  
PBS Only

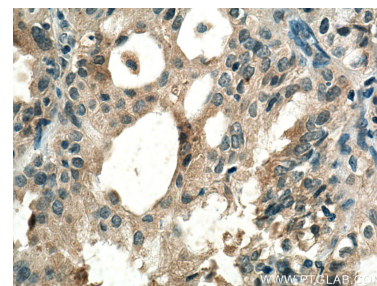
## Selected Validation Data



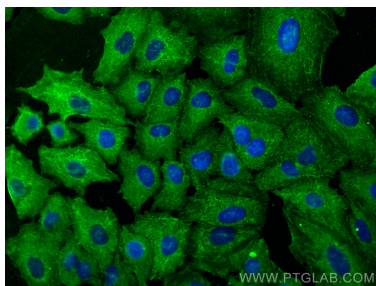
Jurkat cells were subjected to SDS PAGE followed by western blot with 66622-1-Ig (RABEPK/p40 antibody) at dilution of 1:3000 incubated at room temperature for 1.5 hours. This data was developed using the same antibody clone with 66622-1-PBS in a different storage buffer formulation.



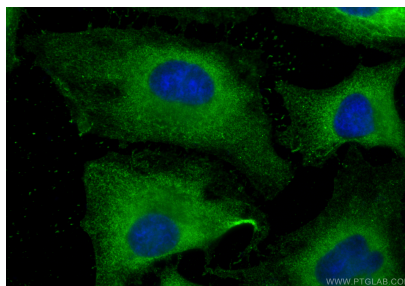
Immunohistochemical analysis of paraffin-embedded human lung cancer tissue slide using 66622-1-Ig (RABEPK/p40 antibody) at dilution of 1:1000 (under 10x lens). Heat mediated antigen retrieval with Tris-EDTA buffer (pH 9.0). This data was developed using the same antibody clone with 66622-1-PBS in a different storage buffer formulation.



Immunohistochemical analysis of paraffin-embedded human lung cancer tissue slide using 66622-1-Ig (RABEPK/p40 antibody) at dilution of 1:1000 (under 40x lens). Heat mediated antigen retrieval with Tris-EDTA buffer (pH 9.0). This data was developed using the same antibody clone with 66622-1-PBS in a different storage buffer formulation.



Immunofluorescent analysis of (-20°C Methanol) fixed A549 cells using RABEPK/p40 antibody (66622-1-Ig, Clone: 1E11A3 ) at dilution of 1:400 and CoraLite®488-Conjugated AffiniPure Goat Anti-Mouse IgG(H+L). This data was developed using the same antibody clone with 66622-1-PBS in a different storage buffer formulation.



Immunofluorescent analysis of (-20°C Ethanol) fixed HeLa cells using RABEPK/p40 antibody (66622-1-Ig, Clone: 1E11A3 ) at dilution of 1:400 and CoraLite®488-Conjugated Goat Anti-Mouse IgG(H+L) (SA00013-1). This data was developed using the same antibody clone with 66622-1-PBS in a different storage buffer formulation.