

For Research Use Only

# SPI1 Monoclonal antibody, PBS Only

Catalog Number: 66618-2-PBS



## Basic Information

<b>Catalog Number:</b> 66618-2-PBS	<b>GenBank Accession Number:</b> NM_003120	<b>Purification Method:</b> Protein A purification
<b>Size:</b> 1mg/ml	<b>GeneID (NCBI):</b> 6688	<b>CloneNo.:</b> 2H3D3
<b>Source:</b> Mouse	<b>ENSEMBL Gene ID:</b> ENSG00000066336	
<b>Isotype:</b> IgG1	<b>UNIPROT ID:</b> P17947	
	<b>Full Name:</b> spleen focus forming virus (SFFV) proviral integration oncogene spi1	
	<b>Calculated MW:</b> 31 kDa	
	<b>Observed MW:</b> 32-38 kDa	

## Applications

**Tested Applications:**  
WB, IHC, Indirect ELISA

**Species Specificity:**  
human, mouse, rat

## Background Information

SPI1, also named as 31 kDa-transforming protein, is a 270 amino acid protein, which belongs to the ETS family. SPI1 is highly expressed in both FV-P and FV-A-induced erythro-leukemia cell lines that have undergone rearrangements of the SPI1 gene due to the insertion of SFFV.

## Storage

**Storage:**  
Store at -80°C.  
**The product is shipped with ice packs. Upon receipt, store it immediately at -80°C**

**Storage Buffer:**  
PBS Only

For technical support and original validation data for this product please contact:

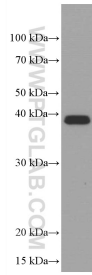
T: 4006900926

E: Proteintech-CN@ptglab.com

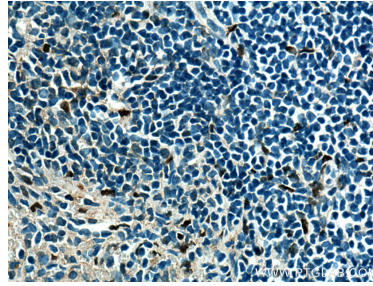
W: ptgcn.com

**This product is exclusively available under Proteintech Group brand and is not available to purchase from any other manufacturer.**

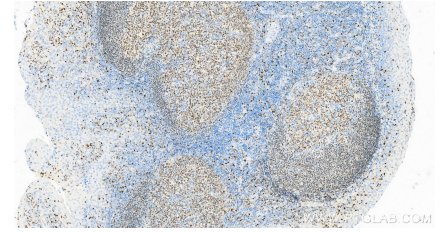
## Selected Validation Data



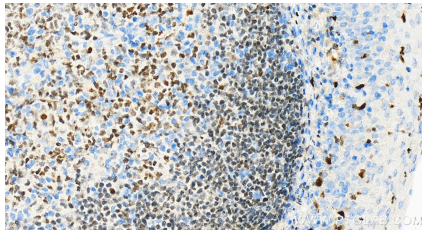
Daudi cells were subjected to SDS PAGE followed by western blot with 66618-2-Ig (SPI1 antibody) at dilution of 1:6000 incubated at room temperature for 1.5 hours. This data was developed using the same antibody clone with 66618-2-PBS in a different storage buffer formulation.



Immunohistochemical analysis of paraffin-embedded mouse spleen tissue slide using 66618-2-Ig (SPI1 antibody) at dilution of 1:1000 (under 40x lens). Heat mediated antigen retrieval with Tris-EDTA buffer (pH 9.0). This data was developed using the same antibody clone with 66618-2-PBS in a different storage buffer formulation.



Immunohistochemical analysis of paraffin-embedded Human tonsillitis tissue slide using 66618-2-Ig (SPI1 antibody) at dilution of 1:4000 (under 20x lens). This data was developed using the same antibody clone with 66618-2-PBS in a different storage buffer formulation.



Immunohistochemical analysis of paraffin-embedded Human tonsillitis tissue slide using 66618-2-Ig (SPI1 antibody) at dilution of 1:4000 (under 20x lens). This data was developed using the same antibody clone with 66618-2-PBS in a different storage buffer formulation.



Immunohistochemical analysis of paraffin-embedded Human tonsillitis tissue slide using 66618-2-Ig (SPI1 antibody) at dilution of 1:2000 (under 20x lens). This data was developed using the same antibody clone with 66618-2-PBS in a different storage buffer formulation.