

For Research Use Only

ACSL4/FACL4 Monoclonal antibody

Catalog Number: 66617-1-Ig

Featured Product

31 Publications



Basic Information

Catalog Number:

66617-1-Ig

Concentration:

1000 ug/ml

Source:

Mouse

Isotype:

IgG1

Immunogen Catalog Number:

AG18085

GenBank Accession Number:

BC034959

GeneID (NCBI):

2182

UNIPROT ID:

O60488

Full Name:

acyl-CoA synthetase long-chain
family member 4

Calculated MW:

711 aa, 79 kDa

Observed MW:

74 kDa

Purification Method:

Protein A purification

CloneNo.:

1H5D3

Recommended Dilutions:

WB 1:3000-1:10000

IHC 1:250-1:1000

Applications

Tested Applications:

WB, IHC, FC (Intra), ELISA

Cited Applications:

WB, IHC

Species Specificity:

human

Cited Species:

human, bovine

**Note-IHC: suggested antigen retrieval with
TE buffer pH 9.0; (*) Alternatively, antigen
retrieval may be performed with citrate
buffer pH 6.0**

Positive Controls:

WB : HeLa cells, HepG2 cells, Caco-2 cells, COLO 320
cells, L02 cells, HT-29 cells

IHC : human cerebellum tissue,

Background Information

Notable Publications

Author	Pubmed ID	Journal	Application
Yongfei He	34790741	Ann Transl Med	WB
Haohao Wang	35801495	J Med Chem	WB
Tong Zhang	35121990	Nat Cancer	WB

Storage

Storage:

Store at -20°C. Stable for one year after shipment.

Storage Buffer:

PBS with 0.02% sodium azide and 50% glycerol, pH7.3

Aliquoting is unnecessary for -20°C storage

For technical support and original validation data for this product please contact:

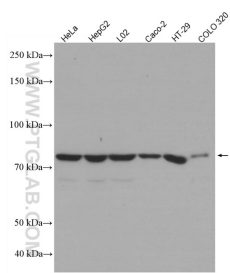
T: 4006900926

E: Proteintech-CN@ptglab.com

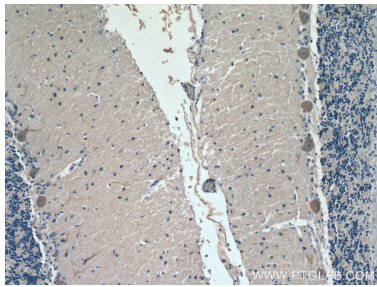
W: ptgcn.com

**This product is exclusively available under Proteintech
Group brand and is not available to purchase from any
other manufacturer.**

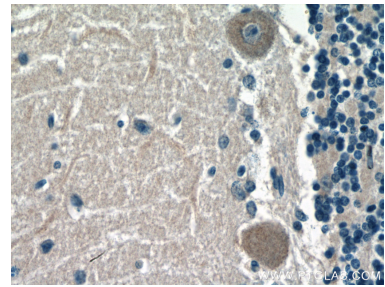
Selected Validation Data



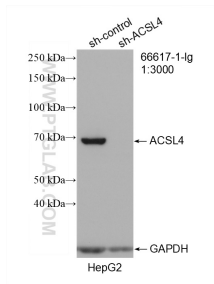
Various lysates were subjected to SDS PAGE followed by western blot with 66617-1-Ig (ACSL4 antibody) at dilution of 1:5000 incubated at room temperature for 1.5 hours.



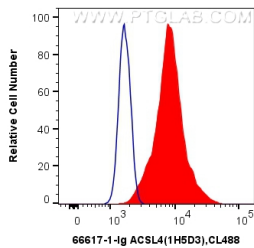
Immunohistochemical analysis of paraffin-embedded human cerebellum tissue slide using 66617-1-Ig (ACSL4 antibody) at dilution of 1:500 (under 10x lens).



Immunohistochemical analysis of paraffin-embedded human cerebellum tissue slide using 66617-1-Ig (ACSL4 antibody) at dilution of 1:500 (under 40x lens).



WB result of ACSL4 antibody (66617-1-Ig; 1:3000; incubated at room temperature for 1.5 hours) with sh-Control and sh-ACSL4 transfected HepG2 cells.



1X10⁶ HEK-293T cells were intracellularly stained with 0.4 ug Anti-Human ACSL4 (66617-1-Ig, Clone:1H5D3) and CoraLite@488-Conjugated AffiniPure Goat Anti-Mouse IgG(H+L) at dilution 1:1000 (red), or 0.4 ug Control Antibody. Cells were fixed with 4% PFA and permeabilized with Flow Cytometry Perm Buffer (PF00011-C).