

For Research Use Only

Pyruvate Carboxylase Monoclonal antibody

Catalog Number: 66615-1-Ig

Featured Product

3 Publications



Basic Information

Catalog Number:

66615-1-Ig

Size:

1300 µg/ml

Source:

Mouse

Isotype:

IgG2a

Immunogen Catalog Number:

AG8846

GenBank Accession Number:

BC011617

GeneID (NCBI):

5091

UNIPROT ID:

P11498

Full Name:

pyruvate carboxylase

Calculated MW:

1178 aa, 130 kDa

Observed MW:

130 kDa

Purification Method:

Protein A purification

CloneNo.:

4F5D1

Recommended Dilutions:

WB 1:2000-1:10000

IHC 1:50-1:500

Applications

Tested Applications:

IHC, WB, ELISA

Cited Applications:

WB, RIP

Species Specificity:

Human, Rat, mouse

Cited Species:

human, mouse

Note-IHC: suggested antigen retrieval with TE buffer pH 9.0; (*) Alternatively, antigen retrieval may be performed with citrate buffer pH 6.0

Positive Controls:

WB : HeLa cells, HepG2 cells, HSC-T6 cells

IHC : mouse brain tissue,

Background Information

Notable Publications

Author	Pubmed ID	Journal	Application
Yongmei Liu	34249688	Front Oncol	WB, RIP
Qinqin He	39163862	Cell Metab	WB
Madeleine L Hart	36883551	Elife	WB

Storage

Storage:

Store at -20°C. Stable for one year after shipment.

Storage Buffer:

PBS with 0.02% sodium azide and 50% glycerol pH 7.3.

Aliquoting is unnecessary for -20°C storage

For technical support and original validation data for this product please contact:

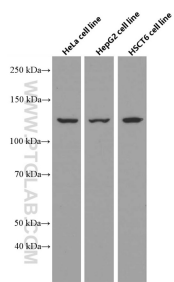
T: 4006900926

E: Proteintech-CN@ptglab.com

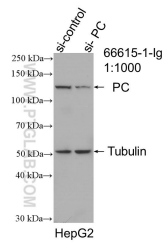
W: ptgcn.com

This product is exclusively available under Proteintech Group brand and is not available to purchase from any other manufacturer.

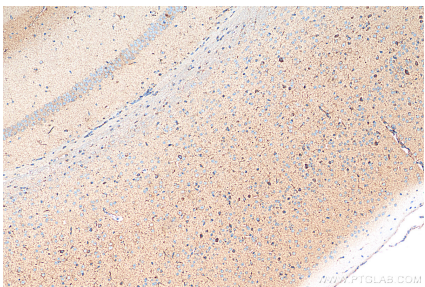
Selected Validation Data



Various lysates were subjected to SDS PAGE followed by western blot with 66615-1-Ig (Pyruvate Carboxylase antibody) at dilution of 1:5000 incubated at room temperature for 1.5 hours.



WB result of Pyruvate Carboxylase antibody (66615-1-Ig; 1:1000; incubated at room temperature for 1.5 hours) with sh-Control and sh-Pyruvate Carboxylase transfected HepG2 cells.



Immunohistochemical analysis of paraffin-embedded mouse brain tissue slide using 66615-1-Ig (Pyruvate Carboxylase antibody) at dilution of 1:200 (under 10x lens). Heat mediated antigen retrieval with Tris-EDTA buffer (pH 9.0).