

# CCRL2 Monoclonal antibody, PBS Only

Catalog Number: 66611-1-PBS

## Basic Information

Catalog Number: 66611-1-PBS	GenBank Accession Number: BC025717	Purification Method: Protein G purification
Size: 1 mg/ml	GeneID (NCBI): 9034	CloneNo.: 2C1E11
Source: Mouse	UNIPROT ID: O00421	
Isotype: IgG1	Full Name: chemokine (C-C motif) receptor-like 2	
Immunogen Catalog Number: AG4045	Calculated MW: 344 aa, 40 kDa	
	Observed MW: 47 kDa	

## Applications

Tested Applications:  
WB, Indirect ELISA, IHC

Species Specificity:  
Human

## Background Information

Chemokine CC motif receptor-like 2 (CCRL2) is a seven-transmembrane domain receptor that shares structural and functional similarities with the family of atypical chemokine receptors (ACKRs) (PMID: 28743719). CCRL2 does not appear to be a signaling receptor, but may have a role in modulating chemokine-triggered immune responses by capturing and internalizing CCL19 or by presenting RARRES2 ligand to CMKLR1, a functional signaling receptors. CCRL2 has been found on almost all hemopoietic cells, including monocytes, macrophages, polymorphonuclear neutrophils (PMNs), T cells, dendritic cells, natural killer cells, and CD34+ progenitor cells, with PMNs expressing the highest levels (PMID: 15188357). CCRL2 is also expressed by barrier cells, such as lymphatic and blood endothelial cells and bronchial and intestinal epithelial cells (PMID: 29056935).

## Storage

Storage:  
Store at -80°C.  
**The product is shipped with ice packs. Upon receipt, store it immediately at -80°C**

Storage Buffer:  
PBS Only

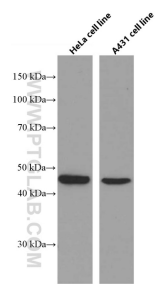
For technical support and original validation data for this product please contact:

T: 4006900926

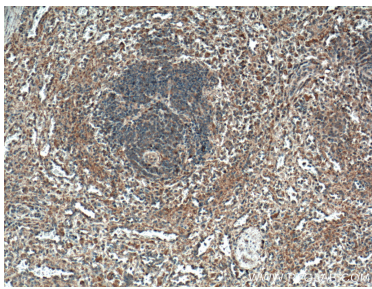
E: [Proteintech-CN@ptglab.com](mailto:Proteintech-CN@ptglab.com)W: [ptgcn.com](http://ptgcn.com)

This product is exclusively available under Proteintech Group brand and is not available to purchase from any other manufacturer.

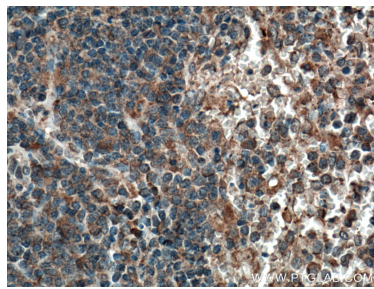
## Selected Validation Data



HeLa cells and A431 cells were subjected to SDS PAGE followed by western blot with 66611-1-Ig (CCRL2 antibody) at dilution of 1:3000 incubated at room temperature for 1.5 hours. This data was developed using the same antibody clone with 66611-1-PBS in a different storage buffer formulation.



Immunohistochemical analysis of paraffin-embedded human spleen tissue slide using 66611-1-Ig (CCRL2 antibody) at dilution of 1:800 (under 10x lens. Heat mediated antigen retrieval with Tris-EDTA buffer (pH 9.0). This data was developed using the same antibody clone with 66611-1-PBS in a different storage buffer formulation.



Immunohistochemical analysis of paraffin-embedded human spleen tissue slide using 66611-1-Ig (CCRL2 antibody) at dilution of 1:800 (under 40x lens. Heat mediated antigen retrieval with Tris-EDTA buffer (pH 9.0). This data was developed using the same antibody clone with 66611-1-PBS in a different storage buffer formulation.