

Palladin Monoclonal antibody

 Catalog Number: **66601-1-Ig** **1 Publications**

Basic Information

Catalog Number: 66601-1-Ig	GenBank Accession Number: BC013867	Purification Method: Protein A purification
Size: 1600 µg/ml	GeneID (NCBI): 23022	CloneNo.: 2A1F6
Source: Mouse	UNIPROT ID: Q8WX93	Recommended Dilutions: WB 1:1000-1:4000 IHC 1:50-1:500 IF-P 1:200-1:800
Isotype: IgG2a	Full Name: palladin, cytoskeletal associated protein	
Immunogen Catalog Number: AG1288	Calculated MW: 1383 aa, 151 kDa	
	Observed MW: 151 kDa	

Applications

Tested Applications: WB, IF-P, IHC, ELISA	Positive Controls:
Cited Applications: WB	WB : human heart tissue, pig heart tissue, rat heart tissue
Species Specificity: Human, rat, pig	IHC : human colon cancer tissue,
Cited Species: human	IF-P : mouse testis tissue,
Note-IHC: suggested antigen retrieval with TE buffer pH 9.0; (*) Alternatively, antigen retrieval may be performed with citrate buffer pH 6.0	

Background Information

Notable Publications

Author	Pubmed ID	Journal	Application
Xiong Shu	36047666	Cancer Med	WB

Storage

Storage:
Store at -20°C. Stable for one year after shipment.

Storage Buffer:
PBS with 0.02% sodium azide and 50% glycerol pH 7.3.

Aliquoting is unnecessary for -20°C storage

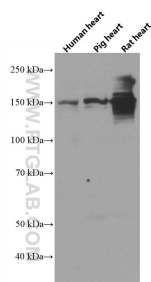
For technical support and original validation data for this product please contact:

T: 4006900926

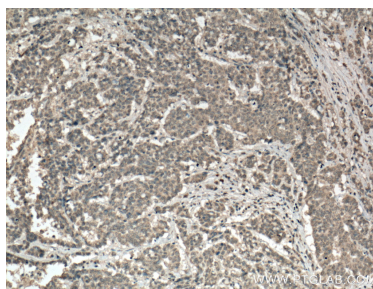
E: Proteintech-CN@ptglab.comW: ptgcn.com

This product is exclusively available under Proteintech Group brand and is not available to purchase from any other manufacturer.

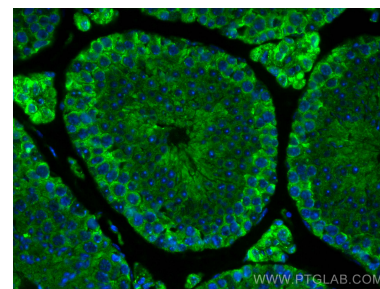
Selected Validation Data



Human heart tissue, pig heart tissue and rat heart tissue were subjected to SDS PAGE followed by western blot with 66601-1-Ig (Palladin antibody) at dilution of 1:2000 incubated at room temperature for 1.5 hours.



Immunohistochemical analysis of paraffin-embedded human colon cancer tissue slide using 66601-1-Ig (Palladin antibody) at dilution of 1:200 (under 10x lens. Heat mediated antigen retrieval with Tris-EDTA buffer (pH 9.0).



Immunofluorescent analysis of (4% PFA) fixed mouse testis tissue using PALLD, palladin antibody (66601-1-Ig, Clone: 2A1F6) at dilution of 1:400 and CoraLite®488-Conjugated AffiniPure Goat Anti-Mouse IgG(H+L).