

For Research Use Only

# ATPB Monoclonal antibody, PBS Only

Catalog Number: 66600-1-PBS



## Basic Information

Catalog Number:	66600-1-PBS	GenBank Accession Number:	BC016512	Purification Method:	Protein A purification
Size:	1mg/ml	GeneID (NCBI):	506	CloneNo.:	1A11B9
Source:	Mouse	UNIPROT ID:	P06576		
Isotype:	IgG2b	Full Name:	ATP synthase, H <sup>+</sup> transporting, mitochondrial F1 complex, beta polypeptide		
Immunogen Catalog Number:	AG11177	Calculated MW:	529 aa, 57 kDa		
		Observed MW:	45-57 kDa		

## Applications

Tested Applications:  
WB, IF, IHC, Indirect ELISA

Species Specificity:  
Human, Mouse, Rat

## Background Information

ATP5B, also named as ATPMB and ATPSB, belongs to the ATPase alpha/beta chains family. It is a high affinity HDL receptor for apolipoprotein A1. ATP5B is a subunit of mitochondrial ATP synthase (F1F0 ATP synthase or Complex V). ATP5B has a calculated molecular mass of 57 kDa and ~5 kDa transit peptide can be removed in the mature form.

## Storage

Storage:  
Store at -80°C.  
The product is shipped with ice packs. Upon receipt, store it immediately at -80°C

Storage Buffer:  
PBS Only

For technical support and original validation data for this product please contact:

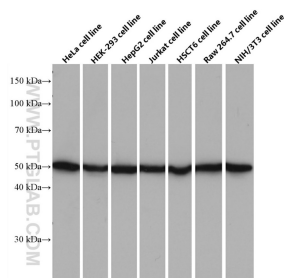
T: 4006900926

E: [Proteintech-CN@ptglab.com](mailto:Proteintech-CN@ptglab.com)

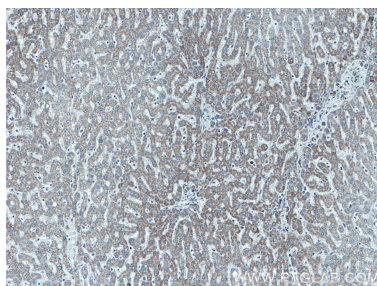
W: [ptgcn.com](http://ptgcn.com)

This product is exclusively available under Proteintech Group brand and is not available to purchase from any other manufacturer.

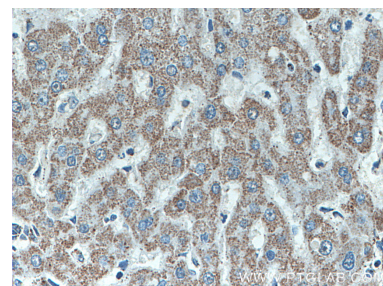
## Selected Validation Data



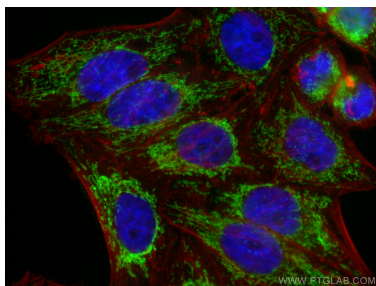
Various lysates were subjected to SDS PAGE followed by western blot with 66600-1-Ig (ATPB antibody) at dilution of 1:10000 incubated at room temperature for 1.5 hours. This data was developed using the same antibody clone with 66600-1-PBS in a different storage buffer formulation.



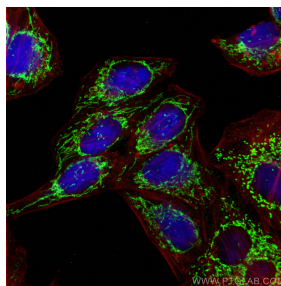
Immunohistochemical analysis of paraffin-embedded human liver tissue slide using 66600-1-Ig (ATPB antibody) at dilution of 1:500 (under 10x lens). This data was developed using the same antibody clone with 66600-1-PBS in a different storage buffer formulation.



Immunohistochemical analysis of paraffin-embedded human liver tissue slide using 66600-1-Ig (ATPB antibody) at dilution of 1:500 (under 40x lens). This data was developed using the same antibody clone with 66600-1-PBS in a different storage buffer formulation.



Immunofluorescent analysis of (4% PFA) fixed HepG2 cells using ATPB antibody (66600-1-Ig, Clone: 1A11B9) at dilution of 1:1000 and CoraLite®488-Conjugated AffiniPure Goat Anti-Mouse IgG(H+L) (SA00013-1), CL594-Phalloidin (red). This data was developed using the same antibody clone with 66600-1-PBS in a different storage buffer formulation.



Immunofluorescent analysis of (4% PFA) fixed HepG2 cells using ATPB antibody (66600-1-Ig, Clone: 1A11B9) at dilution of 1:1000 and CoraLite®488-Conjugated AffiniPure Goat Anti-Mouse IgG(H+L) (SA00013-1), CL594-Phalloidin (red). This data was developed using the same antibody clone with 66600-1-PBS in a different storage buffer formulation.