

For Research Use Only

# CHCHD6 Monoclonal antibody, PBS Only (Capture)

Catalog Number: 66597-1-PBS



## Basic Information

Catalog Number:

66597-1-PBS

Size:

1mg/ml

Source:

Mouse

Isotype:

IgG2a

Immunogen Catalog Number:

AG14700

GenBank Accession Number:

BC006123

GeneID (NCBI):

84303

UNIPROT ID:

Q9BRQ6

Full Name:

coiled-coil-helix-coiled-coil-helix domain containing 6

Calculated MW:

235 aa, 26 kDa

Observed MW:

26-29 kDa

Purification Method:

Protein A purification

CloneNo.:

2A11E9

## Applications

Tested Applications:

WB, IF/ICC, Cytometric bead array, Indirect ELISA

Species Specificity:

human

## Background Information

### Storage

Storage:

Store at -80°C.

The product is shipped with ice packs. Upon receipt, store it immediately at -80°C

Storage Buffer:

PBS Only

For technical support and original validation data for this product please contact:

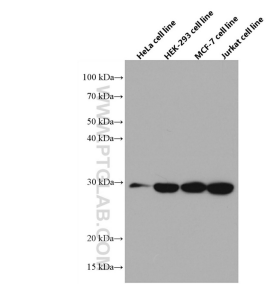
T: 4006900926

E: [Proteintech-CN@ptglab.com](mailto:Proteintech-CN@ptglab.com)

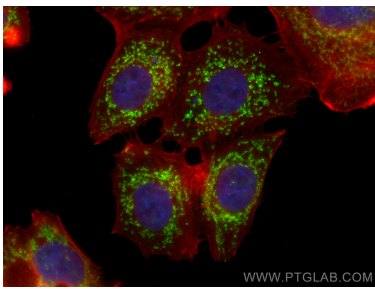
W: [ptgcn.com](http://ptgcn.com)

This product is exclusively available under Proteintech Group brand and is not available to purchase from any other manufacturer.

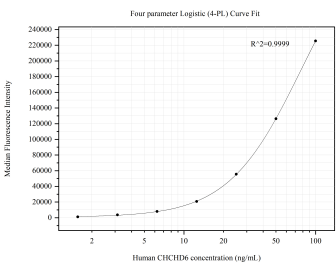
Selected Validation Data



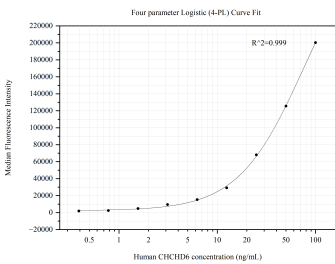
Various lysates were subjected to SDS PAGE followed by western blot with 66597-1-Ig (CHCHD6 antibody) at dilution of 1:3000 incubated at room temperature for 1.5 hours. This data was developed using the same antibody clone with 66597-1-PBS in a different storage buffer formulation.



Immunofluorescent analysis of (4% PFA) fixed MCF-7 cells using CHCHD6 antibody (66597-1-Ig, Clone: 2A11E9) at dilution of 1:800 and CoraLite®488-Conjugated AffiniPure Goat Anti-Mouse IgG(H+L), CL594-Phalloidin (red). This data was developed using the same antibody clone with 66597-1-PBS in a different storage buffer formulation.



Cytometric bead array standard curve of MP50477-2, CHCHD6 Monoclonal Matched Antibody Pair, PBS Only. Capture antibody: 66597-1-PBS. Detection antibody: 66597-4-PBS. Standard: Ag14700. Range: 1.563-100 ng/mL



Cytometric bead array standard curve of MP50477-4, CHCHD6 Monoclonal Matched Antibody Pair, PBS Only. Capture antibody: 66597-1-PBS. Detection antibody: 66597-3-PBS. Standard: Ag14700. Range: 0.391-100 ng/mL