

For Research Use Only

# TOM70 Monoclonal antibody

Catalog Number: 66593-1-Ig

Featured Product

5 Publications



## Basic Information

Catalog Number:

66593-1-Ig

Size:

1200 µg/ml

Source:

Mouse

Isotype:

IgG2a

Immunogen Catalog Number:

AG6027

GenBank Accession Number:

BC052994

GeneID (NCBI):

9868

UNIPROT ID:

O94826

Full Name:

translocase of outer mitochondrial membrane 70 homolog A (S. cerevisiae)

Calculated MW:

67 kDa

Observed MW:

70 kDa

Purification Method:

Protein A purification

CloneNo.:

1H8A1

Recommended Dilutions:

WB 1:5000-1:50000

IHC 1:150-1:600

IF/ICC 1:50-1:500

## Applications

Tested Applications:

WB, IHC, IF/ICC, ELISA

Cited Applications:

WB, IF

Species Specificity:

Human, Mouse, Rat, Pig

Cited Species:

human, mouse

**Note-IHC: suggested antigen retrieval with TE buffer pH 9.0; (\*) Alternatively, antigen retrieval may be performed with citrate buffer pH 6.0**

Positive Controls:

**WB** : HeLa cells, HepG2 cells, MCF-7 cells, HEK-293 cells, Jurkat cells, HSC-T6 cells, PC-12 cells, NIH/3T3 cells, 4T1 cells

**IHC** : mouse brain tissue, human brain tissue

**IF/ICC** : HeLa cells, HeLa cells

## Background Information

TOM70 is a mitochondrial import receptor responsible for the import of cytosol synthesized precursor proteins into the mitochondria. Tom70 is a member of the tetratricopeptide repeat (TPR) co-chaperone family and contains a conserved TPR clamp domain for interaction with Hsc70 and Hsp90. Recently overexpression of TOM70 has been linked to chemoresistance to drugs in breast cancer cell lines. It is also believed that Tom70 is significantly associated with breast cancer relapse and may predict the recurrence of ovarian cancer.

## Notable Publications

Author	Pubmed ID	Journal	Application
Lilian Phu	32142684	Mol Cell	WB
Qiang Wang	34446444	Science	WB
Rachael McMinimy	39642856	Mol Cell	WB

## Storage

Storage:

Store at -20°C. Stable for one year after shipment.

Storage Buffer:

PBS with 0.02% sodium azide and 50% glycerol pH 7.3.

Aliquoting is unnecessary for -20°C storage

For technical support and original validation data for this product please contact:

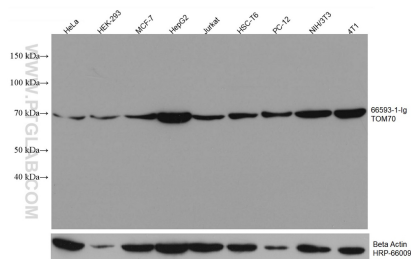
T: 4006900926

E: [Proteintech-CN@ptglab.com](mailto:Proteintech-CN@ptglab.com)

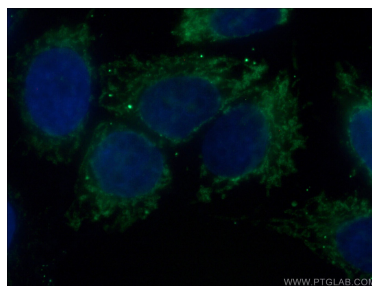
W: [ptgcn.com](http://ptgcn.com)

**This product is exclusively available under Proteintech Group brand and is not available to purchase from any other manufacturer.**

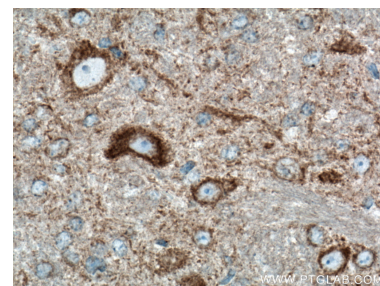
## Selected Validation Data



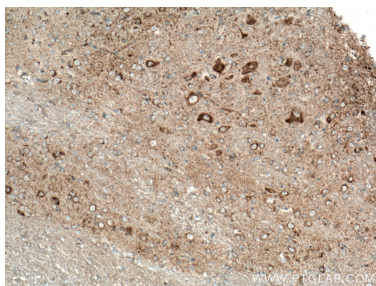
Various lysates were subjected to SDS PAGE followed by western blot with 66593-1-Ig (TOM70 antibody) at dilution of 1:10000 incubated at room temperature for 1.5 hours. The membrane was stripped and reblotted with HRP-conjugated Beta Actin Monoclonal antibody (HRP-66009) as loading control.



Immunofluorescent analysis of (4% PFA) fixed HeLa cells using 66593-1-Ig (TOM70 antibody) at dilution of 1:200 and Alexa Fluor 488-Conjugated Goat Anti-Mouse IgG(H+L).



Immunohistochemical analysis of paraffin-embedded mouse brain tissue slide using 66593-1-Ig (TOM70 antibody) at dilution of 1:300 (under 40x lens). Heat mediated antigen retrieval with Tris-EDTA buffer (pH 9.0).



Immunohistochemical analysis of paraffin-embedded mouse brain tissue slide using 66593-1-Ig (TOM70 antibody) at dilution of 1:300 (under 10x lens). Heat mediated antigen retrieval with Tris-EDTA buffer (pH 9.0).