

For Research Use Only

# RAF1 Monoclonal antibody, PBS Only

Catalog Number: 66592-1-PBS

Featured Product



## Basic Information

Catalog Number:

66592-1-PBS

Size:

1mg/ml

Source:

Mouse

Isotype:

IgG2a

Immunogen Catalog Number:

AG25423

GenBank Accession Number:

BC018119

GeneID (NCBI):

5894

UNIPROT ID:

P04049

Full Name:

v-raf-1 murine leukemia viral  
oncogene homolog 1

Calculated MW:

648 aa, 73 kDa

Observed MW:

70-75 kDa

Purification Method:

Protein A purification

CloneNo.:

1D6A1

## Applications

Tested Applications:

WB, IHC, IF/ICC, ELISA

Species Specificity:

human, mouse

## Background Information

Raf-1 proto-oncogene, serine/threonine kinase(RAF1), is a MAP kinase kinase kinase (MAP3K), which functions downstream of the Ras family of membrane associated GTPases to which it binds directly. RAF1 has two isoforms with MW of 73, 75 kDa. RAF1 plays an important role in the control of gene expression involved in the cell division cycle, apoptosis, cell differentiation and cell migration.

## Storage

Storage:

Store at -80°C.

**The product is shipped with ice packs. Upon receipt, store it immediately at -80°C**

Storage Buffer:

PBS Only

For technical support and original validation data for this product please contact:

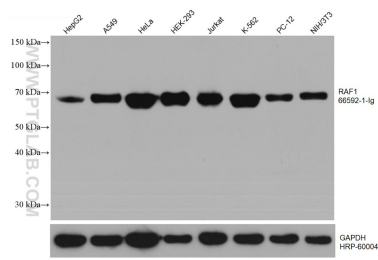
T: 4006900926

E: [Proteintech-CN@ptglab.com](mailto:Proteintech-CN@ptglab.com)

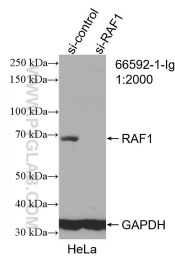
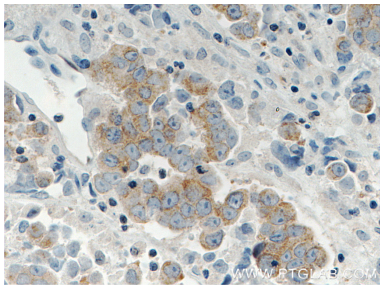
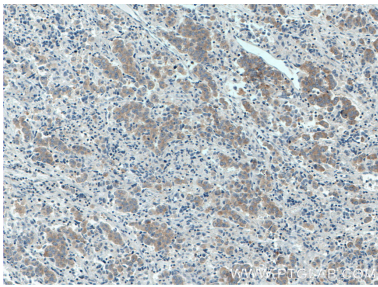
W: [ptgcn.com](http://ptgcn.com)

**This product is exclusively available under Proteintech Group brand and is not available to purchase from any other manufacturer.**

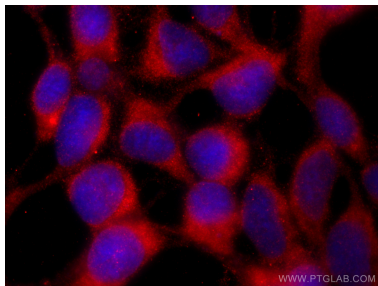
Selected Validation Data



Various lysates were subjected to SDS PAGE followed by western blot with 66592-1-Ig (RAF1 antibody) at dilution of 1:3000 incubated at room temperature for 1.5 hours. The membrane was stripped and reblotted with HRP-conjugated GAPDH Monoclonal antibody (HRP-60004) as loading control. This data was developed using the same antibody clone with 66592-1-PBS in a different storage buffer formulation.



WB result of RAF1 antibody (66592-1-Ig; 1:2000; incubated at room temperature for 1.5 hours) with sh-Control and sh-RAF1 transfected HEK-293 cells. This data was developed using the same antibody clone with 66592-1-PBS in a different storage buffer formulation.



Immunofluorescent analysis of (-20°C Ethanol) fixed HEK-293 cells using RAF1 antibody (66592-1-Ig, Clone: 1D6A1) at dilution of 1:800 and Coralite® 488-Conjugated AffiniPure Goat Anti-Mouse IgG(H+L) (SA00013-1). This data was developed using the same antibody clone with 66592-1-PBS in a different storage buffer formulation.