

For Research Use Only

WBP2 Monoclonal antibody

Catalog Number: 66585-1-Ig

Featured Product

1 Publications



Basic Information

Catalog Number:

66585-1-Ig

Size:

1900 µg/ml

Source:

Mouse

Isotype:

IgG1

Immunogen Catalog Number:

AG2661

GenBank Accession Number:

BC010616

GeneID (NCBI):

23558

UNIPROT ID:

Q969T9

Full Name:

WW domain binding protein 2

Calculated MW:

261 aa, 28 kDa

Observed MW:

30-40 kDa

Purification Method:

Protein G purification

CloneNo.:

2B4G7

Recommended Dilutions:

WB 1:2000-1:10000

IHC 1:250-1:1000

IF/ICC 1:400-1:1600

Applications

Tested Applications:

IF/ICC, IHC, WB, ELISA

Cited Applications:

IF

Species Specificity:

Human, mouse

Cited Species:

human

Note-IHC: suggested antigen retrieval with TE buffer pH 9.0; (*) Alternatively, antigen retrieval may be performed with citrate buffer pH 6.0

Positive Controls:

WB : HeLa cells, HEK-293 cells, NIH/3T3 cells, MCF-7 cells, Jurkat cells

IHC : mouse testis tissue,

IF/ICC : HeLa cells,

Background Information

Notable Publications

Author	Pubmed ID	Journal	Application
Zhe Zheng	33658485	Cell Death Dis	IF

Storage

Storage:

Store at -20°C. Stable for one year after shipment.

Storage Buffer:

PBS with 0.02% sodium azide and 50% glycerol pH 7.3.

Aliquoting is unnecessary for -20°C storage

For technical support and original validation data for this product please contact:

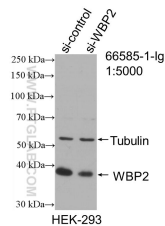
T: 4006900926

E: Proteintech-CN@ptglab.com

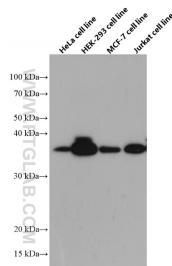
W: ptgcn.com

This product is exclusively available under Proteintech Group brand and is not available to purchase from any other manufacturer.

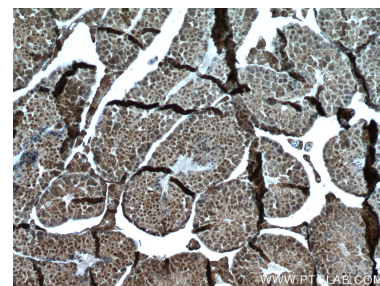
Selected Validation Data



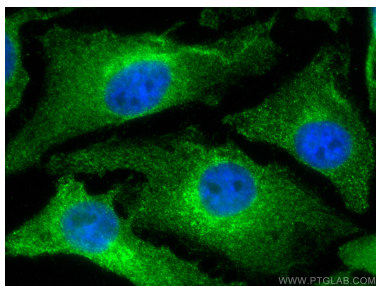
WB result of WBP2 antibody (66585-1-Ig; 1:5000; incubated at room temperature for 1.5 hours) with sh-Control and sh-WBP2 transfected HEK-293 cells.



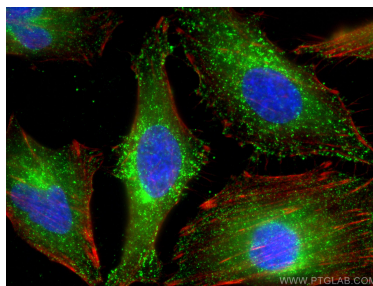
HeLa cells were subjected to SDS PAGE followed by western blot with 66585-1-Ig (WBP2 antibody) at dilution of 1:5000 incubated at room temperature for 1.5 hours.



Immunohistochemical analysis of paraffin-embedded mouse testis tissue slide using 66585-1-Ig (WBP2 antibody) at dilution of 1:500 (under 10x lens. Heat mediated antigen retrieval with Tris-EDTA buffer (pH 9.0).



Immunofluorescent analysis of (4% PFA) fixed HeLa cells using WBP2 antibody (66585-1-Ig, Clone: 2B4G7) at dilution of 1:800 and CoraLite®488-Conjugated AffiniPure Goat Anti-Mouse IgG(H+L).



Immunofluorescent analysis of (-20°C Ethanol) fixed HeLa cells using WBP2 antibody (66585-1-Ig, Clone: 2B4G7) at dilution of 1:800 and CoraLite®488-Conjugated AffiniPure Goat Anti-Mouse IgG(H+L), CL594-Phalloidin (red).