

For Research Use Only

# SLC9A9 Monoclonal antibody

Catalog Number: 66577-1-Ig



## Basic Information

Catalog Number:

66577-1-Ig

Size:

2500 µg/ml

Source:

Mouse

Isotype:

IgG2a

Immunogen Catalog Number:

AG4660

GenBank Accession Number:

BC035779

GeneID (NCBI):

285195

UNIPROT ID:

Q8IVB4

Full Name:

solute carrier family 9  
(sodium/hydrogen exchanger),  
member 9

Calculated MW:

645 aa, 73 kDa

Observed MW:

73 kDa

Purification Method:

Protein A purification

CloneNo.:

1B8D9

Recommended Dilutions:

WB 1:2000-1:10000

IHC 1:250-1:1000

IF 1:400-1:1600

## Applications

Tested Applications:

IF/ICC, IHC, WB, ELISA

Species Specificity:

Human, Mouse, Rat

**Note-IHC: suggested antigen retrieval with  
TE buffer pH 9.0; (\*) Alternatively, antigen  
retrieval may be performed with citrate  
buffer pH 6.0**

Positive Controls:

WB: HeLa cells, HEK-293 cells, MCF-7 cells, HepG2  
cells, HSC-T6 cells, NIH/3T3 cells, RAW 264.7 cells

IHC: human kidney tissue, human tonsillitis  
tissue, human liver cancer tissue

IF: HepG2 cells,

## Background Information

### Storage

Storage:

Store at -20°C. Stable for one year after shipment.

Storage Buffer:

PBS with 0.02% sodium azide and 50% glycerol pH 7.3.

Aliquoting is unnecessary for -20°C storage

For technical support and original validation data for this product please contact:

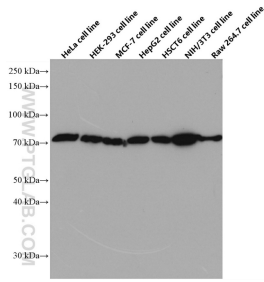
T: 4006900926

E: [Proteintech-CN@ptglab.com](mailto:Proteintech-CN@ptglab.com)

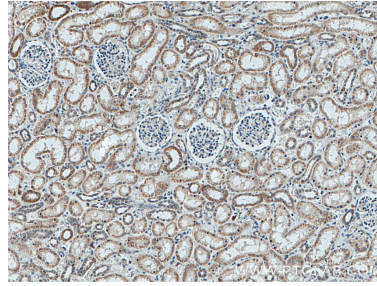
W: [ptgcn.com](http://ptgcn.com)

**This product is exclusively available under Proteintech Group brand and is not available to purchase from any other manufacturer.**

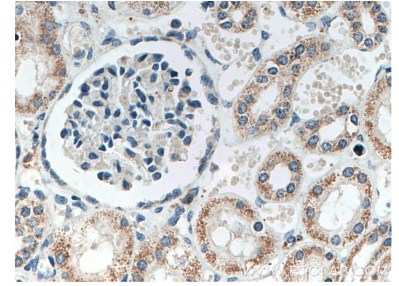
## Selected Validation Data



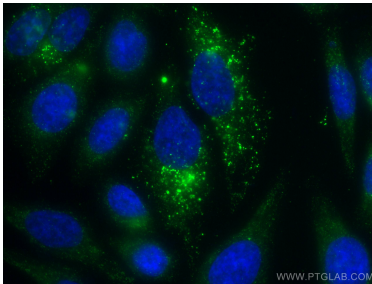
Various lysates were subjected to SDS PAGE followed by western blot with 66577-1-Ig (SLC9A9 antibody) at dilution of 1:5000 incubated at room temperature for 1.5 hours.



Immunohistochemical analysis of paraffin-embedded human kidney tissue slide using 66577-1-Ig (SLC9A9 antibody) at dilution of 1:500 (under 10x lens. Heat mediated antigen retrieval with Tris-EDTA buffer (pH 9.0).



Immunohistochemical analysis of paraffin-embedded human kidney tissue slide using 66577-1-Ig (SLC9A9 antibody) at dilution of 1:500 (under 40x lens. Heat mediated antigen retrieval with Tris-EDTA buffer (pH 9.0).



Immunofluorescent analysis of (-20°C Ethanol) fixed HepG2 cells using SLC9A9 antibody (66577-1-Ig, Clone: 1B8D9) at dilution of 1:800 and CoraLite®488-Conjugated AffiniPure Goat Anti-Mouse IgG(H+L).