

# CIN85 Monoclonal antibody, PBS Only

Catalog Number: 66571-1-PBS

## Basic Information

Catalog Number: 66571-1-PBS	GenBank Accession Number: BC015806	Purification Method: Protein G purification
Size: 1 mg/ml	GeneID (NCBI): 30011	CloneNo.: 3C12D2
Source: Mouse	UNIPROT ID: Q96B97	
Isotype: IgG1	Full Name: SH3-domain kinase binding protein 1	
Immunogen Catalog Number: AG2777	Calculated MW: 665 aa, 73 kDa	
	Observed MW: 85 kDa	

## Applications

Tested Applications:  
WB, Indirect ELISA

Species Specificity:  
Human, mouse, rat

## Background Information

CIN85 is identified as a Cbl-interacting protein of 85 kDa and belongs to adaptor/scaffold proteins. It composed of three N-terminal SH3 domains followed by a proline-rich region and a C-terminal coiled-coil region. In association with c-Cbl (Casitas B-lineage lymphoma), an E3 ubiquitin ligase. As an adaptor protein, CIN85 is involved in Cbl-dependent EGFR internalization, intracellular receptor trafficking, sorting and degradation. Moreover, through the SH3 domains and the proline-rich region, CIN85 is implicated in many protein-protein interactions and it is found to play important roles in other processes such as apoptosis, rearrangement of actin cytoskeleton, cell adhesion, immunological synapse, cell migration and invasion.

## Storage

Storage:  
Store at -80°C.  
The product is shipped with ice packs. Upon receipt, store it immediately at -80°C

Storage Buffer:  
PBS Only

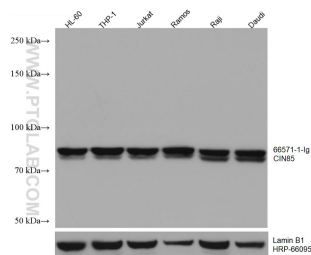
For technical support and original validation data for this product please contact:

T: 4006900926

E: [Proteintech-CN@ptglab.com](mailto:Proteintech-CN@ptglab.com)W: [ptgcn.com](http://ptgcn.com)

This product is exclusively available under Proteintech Group brand and is not available to purchase from any other manufacturer.

## Selected Validation Data



Various lysates were subjected to SDS PAGE followed by western blot with 66571-1-Ig (CIN85 antibody) at dilution of 1:5000 incubated at room temperature for 1.5 hours. The membrane was stripped and reblotted with HRP-conjugated Lamin B1 Monoclonal antibody (HRP-66095) as loading control. This data was developed using the same antibody clone with 66571-1-PBS in a different storage buffer formulation.