

For Research Use Only

LATS1 Monoclonal antibody, PBS Only



Catalog Number: 66569-1-PBS

Featured Product

Basic Information

Catalog Number:

66569-1-PBS

Size:

1mg/ml

Source:

Mouse

Isotype:

IgG1

Immunogen Catalog Number:

AG11140

GenBank Accession Number:

BC015665

GeneID (NCBI):

9113

UNIPROT ID:

O95835

Full Name:

LATS, large tumor suppressor, homolog 1 (Drosophila)

Calculated MW:

15 kDa, 127 kDa

Observed MW:

140-150 kDa, 120 kDa

Purification Method:

Protein G purification

CloneNo.:

2A8F1

Applications

Tested Applications:

WB, Indirect ELISA

Species Specificity:

Human

Background Information

LATS1 (Large tumor suppressor homolog 1) is also named as WARTS and belongs to the AGC Ser/Thr protein kinase family. The gene encodes a highly conserved (from fly to human) protein kinase that plays a crucial role in the prevention of tumor formation by controlling the progression of mitosis. The expression of both long (170 kDa) and short lats1 isoforms (120 kDa) in vertebrate retinal cells raises the possibility that these lats1 proteins may act as negative key regulators of the cell cycle each of them performing a unique role (PMID:15777619). In mammalian cells, LATS1 was phosphorylated in a cell cycle-dependent manner and complexed with CDC2 in early mitosis (PMID:9988268). LATS1 also can be detected as 120 kDa and 140-150 kDa, and play a key role in the regulation of Hippo pathway (PMID: 27940445).

Storage

Storage:

Store at -80°C.

The product is shipped with ice packs. Upon receipt, store it immediately at -80°C

Storage Buffer:

PBS Only

For technical support and original validation data for this product please contact:

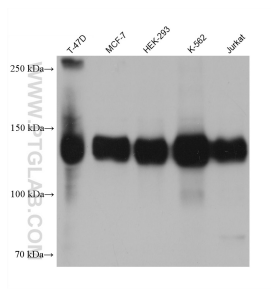
T: 4006900926

E: Proteintech-CN@ptglab.com

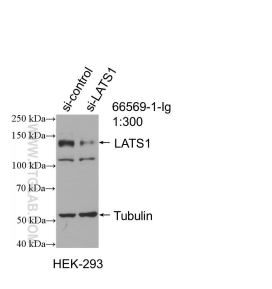
W: ptgcn.com

This product is exclusively available under Proteintech Group brand and is not available to purchase from any other manufacturer.

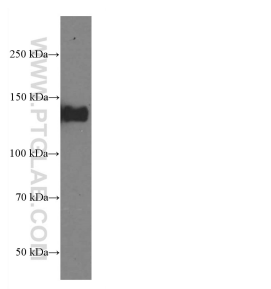
Selected Validation Data



Various lysates were subjected to SDS PAGE followed by western blot with 66569-1-Ig (LATs1 antibody) at dilution of 1:5000 incubated at room temperature for 1.5 hours. This data was developed using the same antibody clone with 66569-1-PBS in a different storage buffer formulation.



WB result of LATs1 antibody (66569-1-Ig; 1:300; incubated at room temperature for 1.5 hours) with sh-Control and sh-LATs1 transfected HepG2 cells. This data was developed using the same antibody clone with 66569-1-PBS in a different storage buffer formulation.



HepG2 cells were subjected to SDS PAGE followed by western blot with 66569-1-Ig (LATs1 antibody) at dilution of 1:2000 incubated at room temperature for 1.5 hours. This data was developed using the same antibody clone with 66569-1-PBS in a different storage buffer formulation.