

Tom22 Monoclonal antibody

 Catalog Number: **66562-1-Ig** **2 Publications**

Basic Information

Catalog Number: 66562-1-Ig	GenBank Accession Number: BC009363	Purification Method: Protein A purification
Size: 1800 µg/ml	GeneID (NCBI): 56993	CloneNo.: 1C2B11
Source: Mouse	UNIPROT ID: Q9NS69	Recommended Dilutions: WB 1:5000-1:50000 IHC 1:50-1:500 IF/ICC 1:200-1:800
Isotype: IgG2a	Full Name: translocase of outer mitochondrial membrane 22 homolog (yeast)	
Immunogen Catalog Number: AG1797	Calculated MW: 15 kDa	
	Observed MW: 22 kDa	

Applications

Tested Applications: WB, IHC, IF/ICC, FC (Intra), ELISA	Positive Controls: WB : A431 cells, T-47D cells, L02 cells, Raji cells, HeLa cells, HEK-293 cells, HepG2 cells, K-562 cells, Jurkat cells IHC : human kidney tissue, human colon cancer tissue IF/ICC : HepG2 cells,
Cited Applications: WB, IF	
Species Specificity: human	
Cited Species: human, mouse	
Note-IHC: suggested antigen retrieval with TE buffer pH 9.0; (*) Alternatively, antigen retrieval may be performed with citrate buffer pH 6.0	

Background Information

Tom22 is a central receptor component of the translocase of the outer membrane of mitochondria responsible for the recognition and translocation of cytosolically synthesized mitochondrial preproteins. It is showed in UniProt that phosphorylation is performed at three positions of this protein which may increase the molecular weight. Catalog#66562-1-Ig recognises the 22 kDa protein larger than the calculated MW which is 15 kDa. Besides, it has been reported the MV of TOMM22 is 22 kDa (PMID:19285029).

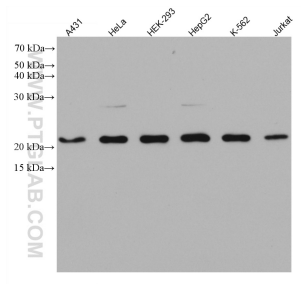
Notable Publications

Author	Pubmed ID	Journal	Application
Qiang Wang	34446444	Science	WB
Wenjie Bao	35933512	Nat Commun	IF

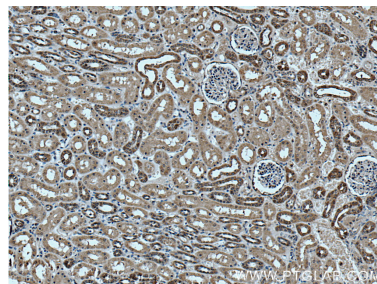
Storage

Storage:
Store at -20°C. Stable for one year after shipment.
Storage Buffer:
PBS with 0.02% sodium azide and 50% glycerol pH 7.3.
 Aliquoting is unnecessary for -20°C storage

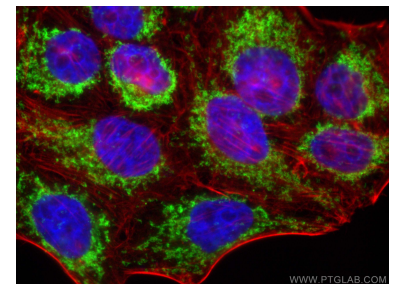
Selected Validation Data



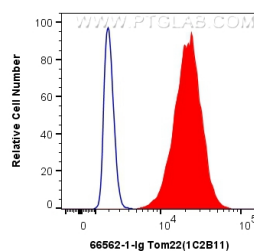
Various lysates were subjected to SDS PAGE followed by western blot with 66562-1-Ig (Tom22 antibody) at dilution of 1:10000 incubated at room temperature for 1.5 hours.



Immunohistochemical analysis of paraffin-embedded human kidney tissue slide using 66562-1-Ig (Tom22 antibody) at dilution of 1:200 (under 10x lens). Heat mediated antigen retrieval with Tris-EDTA buffer (pH 9.0).



Immunofluorescent analysis of (4% PFA) fixed HepG2 cells using Tom22 antibody (66562-1-Ig, Clone: 1C2B11) at dilution of 1:400 and CoraLite®488-Conjugated AffiniPure Goat Anti-Mouse IgG(H+L) (SA00013-1), CL594-phalloidin (red).



1X10⁶ HEK-293 cells were intracellularly stained with 0.4 ug Anti-Human Tom22 (66562-1-Ig, Clone:1C2B11) and CoraLite®488-Conjugated AffiniPure Goat Anti-Mouse IgG(H+L) at dilution 1:1000 (red), or 0.4 ug Mouse IgG2a Isotype Control (C1.18.4) (65208-1-Ig, Clone: C1.18.4) (blue). Cells were fixed with 4% PFA and permeabilized with Flow Cytometry Perm Buffer (PF00011-C).