

For Research Use Only

# HE4 Monoclonal antibody, PBS Only (Capture)

Catalog Number: 66557-1-PBS



## Basic Information

Catalog Number: 66557-1-PBS	GenBank Accession Number: BC046106	Purification Method: Protein G purification
Size: 1mg/ml	GeneID (NCBI): 10406	CloneNo.: 5B2D9
Source: Mouse	UNIPROT ID: Q14508	
Isotype: IgG1	Full Name: WAP four-disulfide core domain 2	
Immunogen Catalog Number: AG5936	Calculated MW: 13 kDa	

## Applications

**Tested Applications:**  
IHC, IF/ICC, Cytometric bead array, Indirect ELISA

**Species Specificity:**  
human

## Background Information

WFDC2, also named as HE4, is a member of the WFDC domain family. The WFDC domain, or WAP Signature motif, contains eight cysteines forming four disulfide bonds at the core of the protein, and functions as a protease inhibitor in many family members. HE4 is expressed in a number of normal tissues, and it is also highly expressed in a number of tumors cells lines, such ovarian, colon, breast, lung and renal cells lines. In some study, HE4 was referred to as a biomarker for ovarian carcinoma.

## Storage

**Storage:**  
Store at -80°C.  
**The product is shipped with ice packs. Upon receipt, store it immediately at -80°C**

**Storage Buffer:**  
PBS Only

For technical support and original validation data for this product please contact:

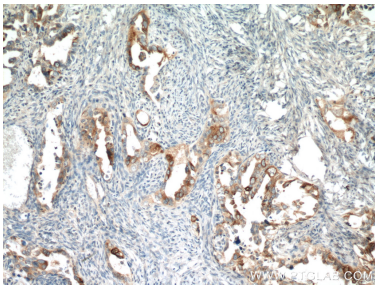
T: 4006900926

E: [Proteintech-CN@ptglab.com](mailto:Proteintech-CN@ptglab.com)

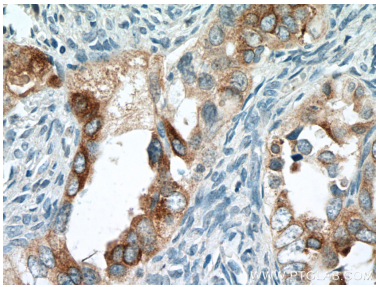
W: [ptgcn.com](http://ptgcn.com)

**This product is exclusively available under Proteintech Group brand and is not available to purchase from any other manufacturer.**

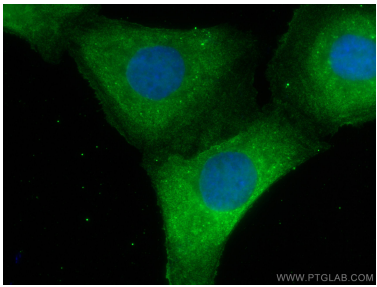
Selected Validation Data



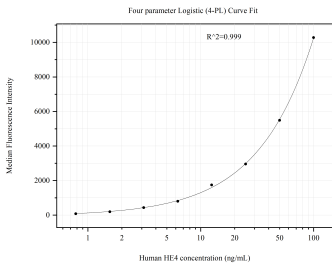
Immunohistochemical analysis of paraffin-embedded human ovary tumor tissue slide using 66557-1-Ig (HE4 antibody) at dilution of 1:5000 (under 10x lens. Heat mediated antigen retrieval with Tris-EDTA buffer (pH 9.0). This data was developed using the same antibody clone with 66557-1-PBS in a different storage buffer formulation.



Immunohistochemical analysis of paraffin-embedded human ovary tumor tissue slide using 66557-1-Ig (HE4 antibody) at dilution of 1:5000 (under 40x lens. Heat mediated antigen retrieval with Tris-EDTA buffer (pH 9.0). This data was developed using the same antibody clone with 66557-1-PBS in a different storage buffer formulation.



Immunofluorescent analysis of (4% PFA) fixed SKOV-3 cells using HE4 antibody (66557-1-Ig, Clone: 5B2D9 ) at dilution of 1:800 and CoraLite®488-Conjugated AffiniPure Goat Anti-Mouse IgG(H+L). This data was developed using the same antibody clone with 66557-1-PBS in a different storage buffer formulation.



Cytometric bead array standard curve of MP51083-2, HE4 Monoclonal Matched Antibody Pair, PBS Only. Capture antibody: 66557-1-PBS. Detection antibody: 66557-3-PBS. Standard:Ag5936. Range: 0.781-100 ng/mL.