

For Research Use Only

Ki-67 Monoclonal antibody, PBS Only (Detector)

Catalog Number: 66555-6-PBS



Basic Information

| | | |
|--------------------------------------|---------------------------------------------------------------|------------------------------------------------|
| Catalog Number: 66555-6-PBS | GenBank Accession Number: NM_002417 | Purification Method: Protein G purification |
| Concentration: 1000 µg/ml | GeneID (NCBI): 4288 | CloneNo.: 1B9H2 |
| Source: Mouse | UNIPROT ID: P46013 | |
| Isotype: IgG1 | Full Name: antigen identified by monoclonal antibody Ki-67 | |
| Immunogen Catalog Number: AG26266 | Calculated MW: 359 kDa | |

Applications

Tested Applications:
IHC, IF/ICC, Cytometric bead array, Indirect ELISA

Species Specificity:
human

Background Information

The Ki-67 protein (also known as MKI67) is a cellular marker for proliferation. Ki67 is present during all active phases of the cell cycle (G1, S, G2 and M), but is absent in resting cells (G0). Cellular content of Ki-67 protein markedly increases during cell progression through S phase of the cell cycle. Therefore, the nuclear expression of Ki67 can be evaluated to assess tumor proliferation by immunohistochemistry. It has been demonstrated to be of prognostic value in breast cancer. In head and neck cancer, several studies have reported an association between high proliferative activity and poorer prognosis.

Storage

Storage:
Store at -80°C.
The product is shipped with ice packs. Upon receipt, store it immediately at -80°C

Storage Buffer:
PBS Only

For technical support and original validation data for this product please contact:

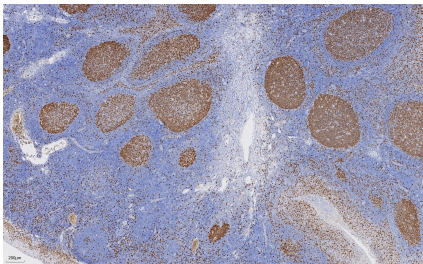
T: 4006900926

E: Proteintech-CN@ptglab.com

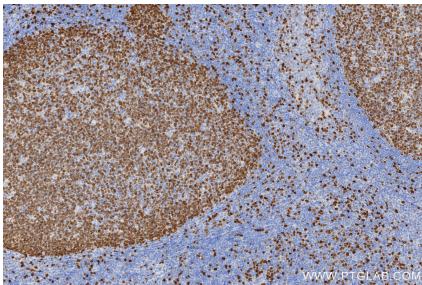
W: ptgcn.com

This product is exclusively available under Proteintech Group brand and is not available to purchase from any other manufacturer.

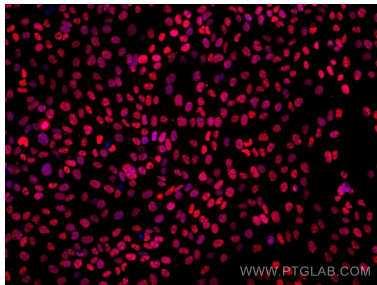
Selected Validation Data



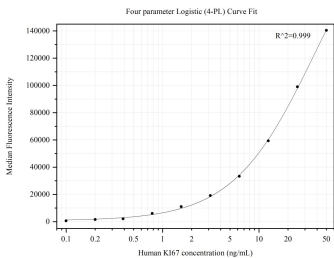
Immunohistochemical analysis of paraffin-embedded human tonsillitis tissue slide using 66555-6-Ig (Ki-67 antibody) at dilution of 1:5000 (under 4x lens). Heat mediated antigen retrieval with Tris-EDTA buffer (pH 9.0). This data was developed using the same antibody clone with 66555-6-PBS in a different storage buffer formulation.



Immunohistochemical analysis of paraffin-embedded human tonsillitis tissue slide using 66555-6-Ig (Ki-67 antibody) at dilution of 1:5000 (under 10x lens). Heat mediated antigen retrieval with Tris-EDTA buffer (pH 9.0). This data was developed using the same antibody clone with 66555-6-PBS in a different storage buffer formulation.



Immunofluorescent analysis of (4% PFA) fixed A431 cells using Ki-67 antibody (66555-6-Ig, Clone: 1B9H2) at dilution of 1:2000 and Multi-rAb CoraLite® Plus 594-Goat Anti-Mouse Recombinant Secondary Antibody (H+L) (Cat.NO. RGAM004). This data was developed using the same antibody clone with 66555-6-PBS in a different storage buffer formulation.



Cytometric bead array standard curve of MP50237-3, Ki67 Monoclonal Matched Antibody Pair, PBS Only. Capture antibody: 66555-5-PBS. Detection antibody: 66555-6-PBS. Standard:Ag26266. Range: 0.098-50 ng/mL