

XLF Monoclonal antibody

Catalog Number: 66552-1-Ig

Basic Information

| | | |
|-------------------------------------|--|---|
| Catalog Number: 66552-1-Ig | GenBank Accession Number: BC030986 | Purification Method: Protein A purification |
| Size: 1400 µg/ml | GeneID (NCBI): 79840 | CloneNo.: 1F8C7 |
| Source: Mouse | UNIPROT ID: Q9H9Q4 | Recommended Dilutions: WB 1:5000-30000 IHC 1:500-1:2000 |
| Isotype: IgG2b | Full Name: nonhomologous end-joining factor 1 | |
| Immunogen Catalog Number: AG2496 | Calculated MW: 35 kDa Observed MW: 37 kDa | |

Applications

Tested Applications:

IHC, WB, ELISA

Species Specificity:

Human

Note-IHC: suggested antigen retrieval with TE buffer pH 9.0; (*) Alternatively, antigen retrieval may be performed with citrate buffer pH 6.0

Positive Controls:

WB : HeLa cells, HEK-293 cells, MCF-7 cells, Jurkat cells

IHC : human testis tissue, human kidney tissue

Background Information

XRCC4-like factor (XLF), also known as Cernunnos and NHEJ1, is a protein encoded by the human NHEJ1 gene and an important repair factor for DNA double-strand breaks. NHEJ is a well-known mechanism for the repair of double-strand breaks (DSBs), a lethal type of DNA damage in mammalian cells. It basically utilizes a group of enzymes to take hold of the ends of a broken DNA molecule, create a bridge between them, and subsequently re-ligate the broken DNA molecule.

Storage

Storage:

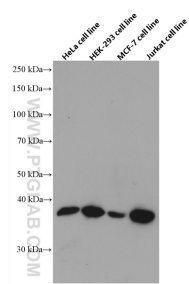
Store at -20°C. Stable for one year after shipment.

Storage Buffer:

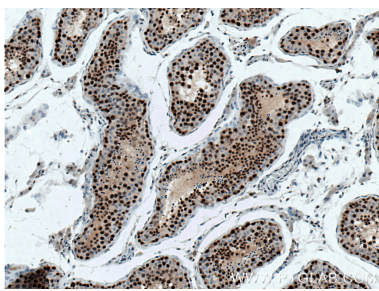
PBS with 0.02% sodium azide and 50% glycerol pH 7.3.

Aliquoting is unnecessary for -20°C storage

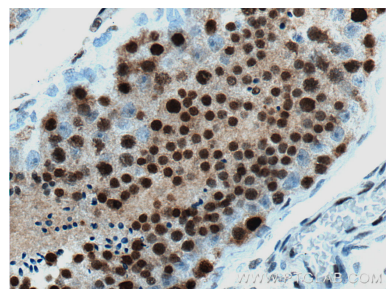
Selected Validation Data



Various lysates were subjected to SDS PAGE followed by western blot with 66552-1-Ig (XLF antibody) at dilution of 1:20000 incubated at room temperature for 1.5 hours.



Immunohistochemical analysis of paraffin-embedded human testis tissue slide using 66552-1-Ig (XLF antibody) at dilution of 1:1000 (under 10x lens). Heat mediated antigen retrieval with Tris-EDTA buffer (pH 9.0).



Immunohistochemical analysis of paraffin-embedded human testis tissue slide using 66552-1-Ig (XLF antibody) at dilution of 1:1000 (under 40x lens). Heat mediated antigen retrieval with Tris-EDTA buffer (pH 9.0).