

For Research Use Only

YME1L1 Monoclonal antibody

Catalog Number: 66551-1-Ig **Featured Product**



Basic Information

Catalog Number: 66551-1-Ig	GenBank Accession Number: BC023507	Purification Method: Protein G purification
Concentration: 1000 ug/ml	GeneID (NCBI): 10730	CloneNo.: 2B7E4
Source: Mouse	UNIPROT ID: Q96TA2	Recommended Dilutions: WB 1:1000-1:6000 IHC 1:150-1:600
Isotype: IgG1	Full Name: YME1-like 1 (S. cerevisiae)	
Immunogen Catalog Number: AG2069	Calculated MW: 716 aa, 80 kDa	
	Observed MW: 63 kDa	

Applications

Tested Applications: WB, IHC, ELISA	Positive Controls:
Species Specificity: human, mouse, rat	WB: A549 cells, NIH/3T3 cells, HeLa cells, HEK-293 cells, MCF-7 cells, Jurkat cells, Raji cells, THP-1 cells, HSC-T6 cells
Note-IHC: suggested antigen retrieval with TE buffer pH 9.0; (*) Alternatively, antigen retrieval may be performed with citrate buffer pH 6.0	IHC: human kidney tissue,

Background Information

YME1L1(ATP-dependent zinc metalloprotease) is also named as FTSH1, YME1L, Meg-4, PAMP. YME1L1 plays a phylogenetically conserved role in mitochondrial protein metabolism. It also ensures cell proliferation, maintains normal cristae morphology and complex I respiration activity, promotes antiapoptotic activity and protects mitochondria from the accumulation of oxidatively damaged membrane proteins. YME1L1 can prevent mitochondrial DNA inserting into nuclear. It has 3 isoforms produced by alternative splicing with the molecular weight of 86 kDa, 80 kDa and 76 kDa. This protein can migrate with a molecular weight of about 55-63 kDa, which is the size of the mature YME1L1 protein(PMID:22252130; 22354088).

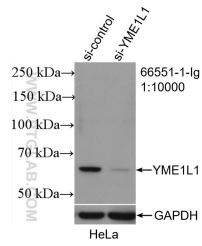
Storage

Storage:
Store at -20°C. Stable for one year after shipment.
Storage Buffer:
PBS with 0.02% sodium azide and 50% glycerol, pH7.3
Aliquoting is unnecessary for -20°C storage

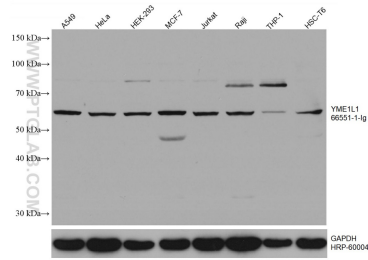
For technical support and original validation data for this product please contact:
T: 4006900926 E: Proteintech-CN@ptglab.com W: ptgcn.com

This product is exclusively available under Proteintech Group brand and is not available to purchase from any other manufacturer.

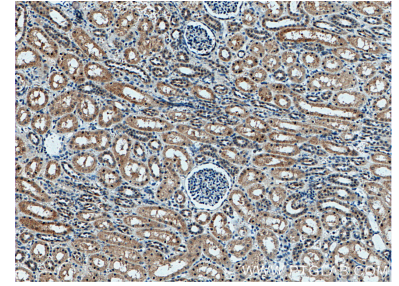
Selected Validation Data



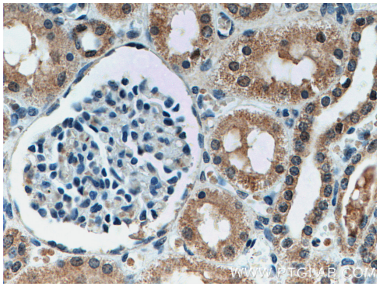
WB result of YME1L1 antibody (66551-1-Ig; 1:10000; incubated at room temperature for 1.5 hours) with sh-Control and sh-YME1L1 transfected HeLa cells.



Various lysates were subjected to SDS PAGE followed by western blot with 66551-1-Ig (YME1L1 antibody) at dilution of 1:3000 incubated at room temperature for 1.5 hours. The membrane was stripped and reblotted with HRP-conjugated GAPDH Monoclonal antibody (HRP-60004) as loading control.



Immunohistochemical analysis of paraffin-embedded human kidney tissue slide using 66551-1-Ig (YME1L1 antibody) at dilution of 1:300 (under 10x lens. Heat mediated antigen retrieval with Tris-EDTA buffer (pH 9.0).



Immunohistochemical analysis of paraffin-embedded human kidney tissue slide using 66551-1-Ig (YME1L1 antibody) at dilution of 1:300 (under 40x lens. Heat mediated antigen retrieval with Tris-EDTA buffer (pH 9.0).