

For Research Use Only

# HuR/ELAVL1 Monoclonal antibody

Catalog Number: 66549-1-Ig

Featured Product

7 Publications



## Basic Information

Catalog Number:

66549-1-Ig

Concentration:

2300 µg/ml

Source:

Mouse

Isotype:

IgG2a

Immunogen Catalog Number:

AG2249

GenBank Accession Number:

BC003376

GeneID (NCBI):

1994

UNIPROT ID:

Q15717

Full Name:

ELAV (embryonic lethal, abnormal vision, Drosophila)-like 1 (Hu antigen R)

Calculated MW:

326 aa, 36 kDa

Observed MW:

34-37 kDa

Purification Method:

Protein A purification

CloneNo.:

1A11H2

Recommended Dilutions:

WB 1:5000-1:50000

IHC 1:500-1:2000

IF/ICC 1:200-1:800

## Applications

Tested Applications:

WB, IHC, IF/ICC, ELISA

Cited Applications:

WB, IF

Species Specificity:

Human, mouse, rat

Cited Species:

human, mouse

**Note-IHC: suggested antigen retrieval with TE buffer pH 9.0; (\*) Alternatively, antigen retrieval may be performed with citrate buffer pH 6.0**

Positive Controls:

**WB** : HeLa cells, HEK-293 cells, A549 cells, MCF-7 cells, Jurkat cells, HSC-T6 cells, PC-12 cells, NIH/3T3 cells, Neuro-2a cells, RAW 264.7 cells, NCI-H1299 cells

**IHC** : human ovary tumor tissue, human breast cancer tissue

**IF/ICC** : HepG2 cells,

## Background Information

ELAVL1, also named as HUR, belongs to the RRM elav family. It is involved in 3'-UTR ARE-mediated MYC stabilization. ELAVL1 binds avidly to the AU-rich element in FOS and IL3/interleukin-3 mRNAs. In the case of the FOS AU-rich element, ELAVL1 binds to a core element of 27 nucleotides that contain AUUUA, AUUUUA and AUUUUUA motifs.

## Notable Publications

Author	Pubmed ID	Journal	Application
Aydan Torun	31487531	Cell Signal	WB
Yuanfei Ren	35051552	Mol Cell Endocrinol	WB,IF
Wei Xu	35466755	J Int Med Res	WB

## Storage

Storage:

Store at -20°C. Stable for one year after shipment.

Storage Buffer:

PBS with 0.02% sodium azide and 50% glycerol pH 7.3.

Aliquoting is unnecessary for -20°C storage

For technical support and original validation data for this product please contact:

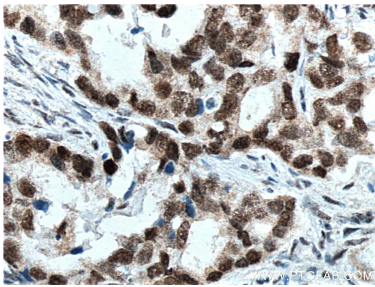
T: 4006900926

E: Proteintech-CN@ptglab.com

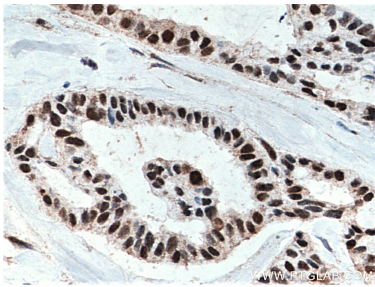
W: ptgcn.com

**This product is exclusively available under Proteintech Group brand and is not available to purchase from any other manufacturer.**

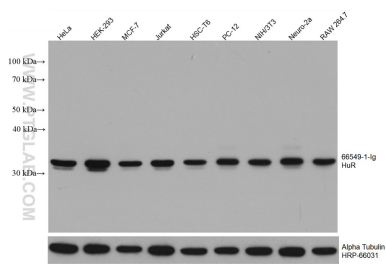
Selected Validation Data



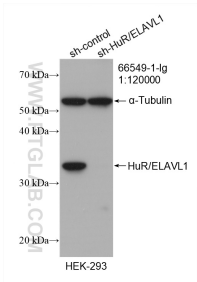
Immunohistochemical analysis of paraffin-embedded human ovary tumor tissue slide using 66549-1-Ig (HuR antibody) at dilution of 1:1000 (under 40x lens. Heat mediated antigen retrieval with Tris-EDTA buffer (pH 9.0).



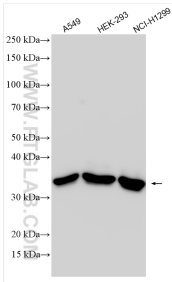
Immunohistochemical analysis of paraffin-embedded human breast cancer tissue slide using 66549-1-Ig (HuR antibody) at dilution of 1:1000 (under 40x lens. Heat mediated antigen retrieval with Tris-EDTA buffer (pH 9.0).



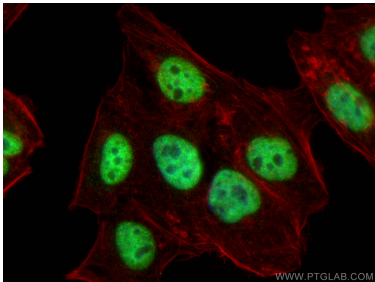
Various lysates were subjected to SDS PAGE followed by western blot with 66549-1-Ig (HuR/ELAVL1 antibody) at dilution of 1:20000 incubated at room temperature for 1.5 hours. The membrane was stripped and reblotted with HRP-conjugated Alpha Tubulin Monoclonal antibody (HRP-66031) as loading control.



WB result of HuR/ELAVL1 antibody (66549-1-Ig; 1:120000; incubated at room temperature for 1.5 hours) with sh-Control and sh-HuR transfected HEK-293 cells.



Various lysates were subjected to SDS PAGE followed by western blot with 66549-1-Ig (HuR/ELAVL1 antibody) at dilution of 1:20000 incubated at room temperature for 1.5 hours.



Immunofluorescent analysis of (4% PFA) fixed HepG2 cells using HuR/ELAVL1 antibody (66549-1-Ig, Clone: 1A11H2) at dilution of 1:400 and CoraLite@488-Conjugated Goat Anti-Mouse IgG(H+L), CL594-Phalloidin (red).