

For Research Use Only

TWIST2 Monoclonal antibody

Catalog Number: 66544-1-Ig **3 Publications**



Basic Information

Catalog Number: 66544-1-Ig	GenBank Accession Number: BC033168	Purification Method: Protein G purification
Size: 2200 µg/ml	GeneID (NCBI): 117581	CloneNo.: 1B12D11
Source: Mouse	UNIPROT ID: Q8WVJ9	Recommended Dilutions: WB 1:5000-1:20000 IHC 1:250-1:1000 IF 1:400-1:1600
Isotype: IgG1	Full Name: twist homolog 2 (Drosophila)	
Immunogen Catalog Number: AG2348	Calculated MW: 160 aa, 18 kDa	
	Observed MW: 22 kDa	

Applications

Tested Applications: IF/ICC, IHC, WB, ELISA	Positive Controls: WB : HeLa cells, THP-1 cells, HL-60 cells, Jurkat cells, NIH/3T3 cells, K-562 cells, HSC-T6 cells IHC : human breast cancer tissue, human ovary tumor tissue IF : HepG2 cells,
Cited Applications: WB, IF, IHC	
Species Specificity: Human, rat, mouse, pig	
Cited Species: human, mouse	
Note-IHC: suggested antigen retrieval with TE buffer pH 9.0; (*) Alternatively, antigen retrieval may be performed with citrate buffer pH 6.0	

Background Information

TWIST2, also named as BHLHA39 and DERMO1, is a basic helix-loop-helix protein which acts as a transcriptional regulator, plays a central role in differentiation of mesodermal during embryogenesis. TWIST2 inhibits the premature or ectopic differentiation of preosteoblast cells during osteogenesis, possibly by changing the internal signal transduction response of osteoblasts to external growth factors. It is also implicated in tumorigenesis, invasion and metastasis. TWIST2 forms both homodimers(45KD) and heterodimers with E2A E proteins, and dimer partner selection is a critical mediator of TWIST function. (PMID:14724576, 16502419).

Notable Publications

Author	Pubmed ID	Journal	Application
Zhangya Pu	35562734	J Transl Med	WB
Beibei Wang	35340228	J Healthc Eng	IHC
Yang Yang	37752124	Nat Commun	IF

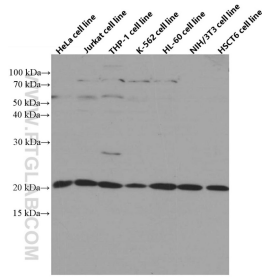
Storage

Storage:
Store at -20°C. Stable for one year after shipment.
Storage Buffer:
PBS with 0.02% sodium azide and 50% glycerol pH 7.3.
Aliquoting is unnecessary for -20°C storage

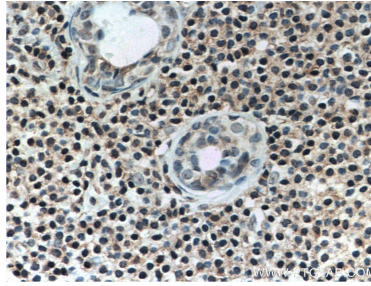
For technical support and original validation data for this product please contact:
T: 4006900926 E: Proteintech-CN@ptglab.com W: ptgcn.com

This product is exclusively available under Proteintech Group brand and is not available to purchase from any other manufacturer.

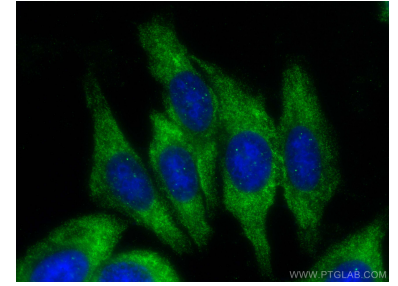
Selected Validation Data



Various cells were subjected to SDS PAGE followed by western blot with 66544-1-Ig (TWIST2 antibody) at dilution of 1:10000 incubated at room temperature for 1.5 hours.



Immunohistochemical analysis of paraffin-embedded human breast cancer tissue slide using 66544-1-Ig (TWIST2 antibody) at dilution of 1:500 (under 40x lens).



Immunofluorescent analysis of (-20°C Ethanol) fixed HepG2 cells using TWIST2 antibody (66544-1-Ig, Clone: 1B12D11) at dilution of 1:800 and CoraLite®488-Conjugated AffiniPure Goat Anti-Mouse IgG(H+L).