

EXOC3L2 Monoclonal antibody, PBS Only

Catalog Number: 66537-1-PBS

Basic Information

Catalog Number:

66537-1-PBS

Size:

1 mg/ml

Source:

Mouse

Isotype:

IgG1

Immunogen Catalog Number:

AG26912

GenBank Accession Number:

BC104947

GeneID (NCBI):

90332

UNIPROT ID:

Q2M3D2

Full Name:

exocyst complex component 3-like 2

Calculated MW:

46 kDa

Observed MW:

46 kDa

Purification Method:

Protein G purification

CloneNo.:

3C1C2

Applications

Tested Applications:

WB, Indirect ELISA, IF

Species Specificity:

Human

Background Information

The exocyst is a protein complex that ensures spatial targeting of exocytotic vesicles to the plasma membrane. Exocyst complex component 3-like 2 (EXOC3L2) associates with the exocyst complex and mediates directional migration of endothelial cells (PMID: 21566143). The gene of human EXOC3L2 maps to chromosome 19q13.32 and encodes a deduced 409-amino acid protein with a calculated molecular mass of about 46 kDa. Mouse Exoc3l2 gene encodes an approximately 250-amino acid protein that lacks the N-terminal domain of human EXOC3L2. Mutations in EXOC3L2 gene may be associated with Alzheimer's disease.

Storage

Storage:

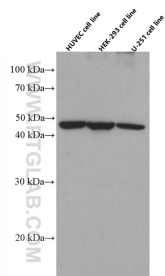
Store at -80°C.

The product is shipped with ice packs. Upon receipt, store it immediately at -80°C

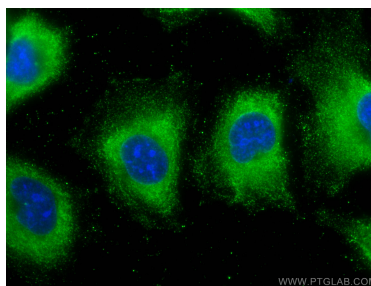
Storage Buffer:

PBS Only

Selected Validation Data



HUVEC, HEK-293 and U-251 cells were subjected to SDS PAGE followed by western blot with 66537-1-Ig (EXOC3L2 antibody) at dilution of 1:3000 incubated at room temperature for 1.5 hours. This data was developed using the same antibody clone with 66537-1-PBS in a different storage buffer formulation.



Immunofluorescent analysis of (-20°C Methanol) fixed HUVEC cells using EXOC3L2 antibody (66537-1-Ig, Clone: 3C1C2) at dilution of 1:800 and CoraLite®488-Conjugated AffiniPure Goat Anti-Mouse IgG(H+L). This data was developed using the same antibody clone with 66537-1-PBS in a different storage buffer formulation.