

For Research Use Only

HLA-E Monoclonal antibody, PBS Only

Catalog Number: 66530-1-PBS



Basic Information

Catalog Number:	GenBank Accession Number:	Purification Method:
66530-1-PBS	BC002578	Protein A purification
Source:	GeneID (NCBI):	CloneNo.:
Mouse	3133	1A4G3
Isotype:	UNIPROT ID:	
IgG2a	P13747	
Immunogen Catalog Number:	Full Name:	
AG6724	major histocompatibility complex, class I, E	
	Calculated MW:	
	40 kDa	
	Observed MW:	
	40 kDa	

Applications

Tested Applications:
WB, IHC, IF-P, IP, Indirect ELISA

Species Specificity:
human

Background Information

Human major histocompatibility complex (MHC) antigens, also referred to as human leukocyte antigens (HLA), are encoded by genes located on the short arm of chromosome 6 (6p21.3). There are two classes of HLA antigens: class I and class II. This class I molecules are membrane glycoproteins composed of a heavy (alpha) chain which is encoded by a HLA class I gene, and β 2-microglobulin light (beta) chain. The most extensively characterized members of the HLA class I gene family are the genes encoding the major transplantation antigens, HLA-A, B and C. HLA-E is a non-classical MHC class I molecule. HLA-E is frequently overexpressed in tumor diseases, transplants and virus-infected cells and represents an immunomodulatory molecule by binding to the receptors CD94/NKG2A, -B and -C on NK and T cells. Due to its immune suppressive features HLA-E expression might represent an important mechanism of tumors to escape immune surveillance. (PMID: 667938; 3375250; 2249951; 27589686)

Storage

Storage:
Store at -80°C.

The product is shipped with ice packs. Upon receipt, store it immediately at -80°C

Storage Buffer:
PBS only, pH7.3

For technical support and original validation data for this product please contact:

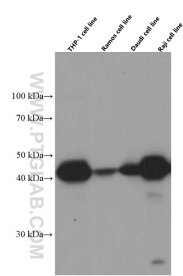
T: 4006900926

E: Proteintech-CN@ptglab.com

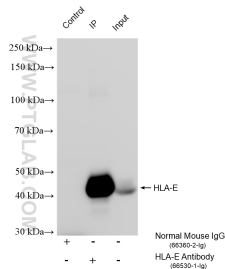
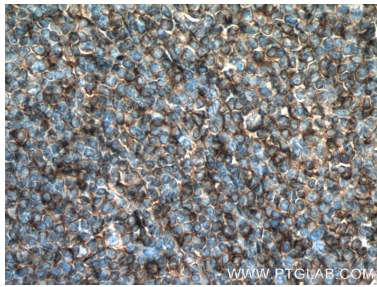
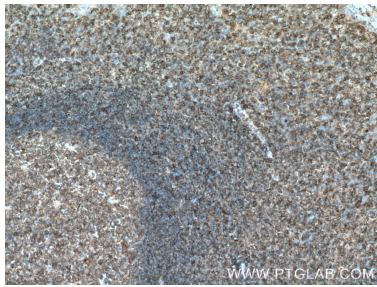
W: ptgcn.com

This product is exclusively available under Proteintech Group brand and is not available to purchase from any other manufacturer.

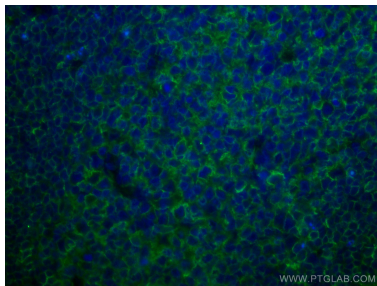
Selected Validation Data



THP-1, Ramos, Daudi, and Raji cells were subjected to SDS PAGE followed by western blot with 66530-1-Ig (HLA-E antibody) at dilution of 1:5000 incubated at room temperature for 1.5 hours. This data was developed using the same antibody clone with 66530-1-PBS in a different storage buffer formulation.



IP result of anti-HLA-E (IP:66530-1-Ig, 4ug; Detection:66530-1-Ig 1:3000) with THP-1 cells lysate 1720 ug. This data was developed using the same antibody clone with 66530-1-PBS in a different storage buffer formulation.



Immunofluorescent analysis of (4% PFA) fixed human tonsillitis tissue using HLA-E antibody (66530-1-Ig, Clone: 1A4G3) at dilution of 1:200 and Coralite®488-Conjugated AffiniPure Goat Anti-Mouse IgG(H+L). This data was developed using the same antibody clone with 66530-1-PBS in a different storage buffer formulation.