

For Research Use Only

# IGF2BP3 Monoclonal antibody

Catalog Number: 66526-1-Ig 1 Publications



## Basic Information

Catalog Number: 66526-1-Ig	GenBank Accession Number: BC065269	Purification Method: Protein G purification
Size: 1000 µg/ml	GeneID (NCBI): 10643	CloneNo.: 2C10B11
Source: Mouse	UNIPROT ID: O00425	Recommended Dilutions: WB 1:1000-1:6000
Isotype: IgG1	Full Name: insulin-like growth factor 2 mRNA binding protein 3	
Immunogen Catalog Number: AG6349	Calculated MW: 64 kDa	
	Observed MW: 65 kDa	

## Applications

Tested Applications: WB, ELISA	Positive Controls:
Cited Applications: WB	WB : HeLa cells, HSC-T6 cells, NIH/3T3 cells, HEK-293 cells, Jurkat cells, HepG2 cells, K-562 cells
Species Specificity: Human, mouse, rat	
Cited Species: human	

## Background Information

IGF2BP3, also named as IMP3, KOC1 and VICKZ3, belongs to the RRM IMP/VICKZ family. It is one of the RNA binding proteins involved in mRNA localization and translational control. IGF2BP3 is expressed during embryogenesis, as well as in some malignant tumors. It can be used as an independent prognostic factor for osteosarcoma.

## Notable Publications

Author	Pubmed ID	Journal	Application
Luis Daniel Cruz-Zaragoza	34672953	Cell	WB

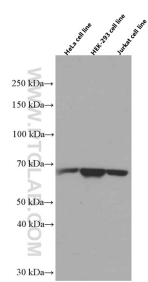
## Storage

Storage:  
Store at -20°C. Stable for one year after shipment.  
Storage Buffer:  
PBS with 0.02% sodium azide and 50% glycerol pH 7.3.  
Aliquoting is unnecessary for -20°C storage

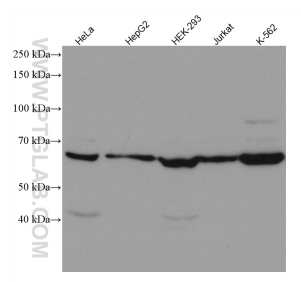
For technical support and original validation data for this product please contact:  
T: 4006900926 E: Proteintech-CN@ptglab.com W: ptgcn.com

This product is exclusively available under Proteintech Group brand and is not available to purchase from any other manufacturer.

# Selected Validation Data



Various cells were subjected to SDS PAGE followed by western blot with 66526-1-Ig (IGF2BP3 antibody) at dilution of 1:3000 incubated at room temperature for 1.5 hours.



Various lysates were subjected to SDS PAGE followed by western blot with 66526-1-Ig (IGF2BP3 antibody) at dilution of 1:5000 incubated at room temperature for 1.5 hours.