

# Recoverin Monoclonal antibody

Catalog Number: 66521-1-Ig 1 Publications

## Basic Information

## Catalog Number:

66521-1-Ig

## Size:

1700 µg/ml

## Source:

Mouse

## Isotype:

IgG1

## Immunogen Catalog Number:

AG0119

## GenBank Accession Number:

BC001720

## GeneID (NCBI):

5957

## Full Name:

recoverin

## Calculated MW:

24 kDa

## Observed MW:

23 kDa

## Purification Method:

Protein G purification

## CloneNo.:

3B8E8

## Recommended Dilutions:

WB 1:2500-1:10000

## Applications

## Tested Applications:

WB, ELISA

## Cited Applications:

WB

## Species Specificity:

Human, rat, pig, mouse

## Cited Species:

human

## Positive Controls:

WB : pig retina tissue, rat retina tissue

## Background Information

Recoverin, belonging to a family of the neuronal calcium sensor (NCS) proteins, has a restricted expression in retinal photoreceptors or neurons or neuroendocrine cells. It has been suggested to play a role in light and dark adaptation by regulating rhodopsin phosphorylation. Recently, it has been found that autoantibodies against recoverin (24 kDa) have been strongly associated with cancer-associated retinopathy (CAR) syndrome, a paraneoplastic disease of the retina. But functions of recoverin in cancer cells remain unknown.

## Notable Publications

| Author       | Pubmed ID | Journal | Application |
|--------------|-----------|---------|-------------|
| Lisheng Chen | 35882889  | Sci Rep | WB          |

## Storage

## Storage:

Store at -20°C. Stable for one year after shipment.

## Storage Buffer:

PBS with 0.02% sodium azide and 50% glycerol pH 7.3.

Aliquoting is unnecessary for -20°C storage

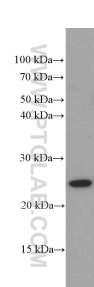
For technical support and original validation data for this product please contact:

T: 4006900926

E: [Proteintech-CN@ptglab.com](mailto:Proteintech-CN@ptglab.com)W: [ptgcn.com](http://ptgcn.com)

This product is exclusively available under Proteintech Group brand and is not available to purchase from any other manufacturer.

## Selected Validation Data



pig retina tissue were subjected to SDS PAGE followed by western blot with 66521-1-Ig (Recoverin antibody) at dilution of 1:5000 incubated at room temperature for 1.5 hours.