

For Research Use Only

Caspase 2/P32/P18 Monoclonal antibody, PBS Only (Detector)

Catalog Number: 66517-1-PBS



Basic Information

Catalog Number: 66517-1-PBS	GenBank Accession Number: BC002427	Purification Method: Protein G purification
Concentration: 1mg/ml	GeneID (NCBI): 835	CloneNo.: 2G4C2
Source: Mouse	UNIPROT ID: P42575	
Isotype: IgG1	Full Name: caspase 2, apoptosis-related cysteine peptidase	
Immunogen Catalog Number: AG20141	Calculated MW: 452 aa, 51 kDa	
	Observed MW: 48-51 kDa, 32 kDa, 18 kDa	

Applications

Tested Applications:
WB, Cytometric bead array, Indirect ELISA

Species Specificity:
human

Background Information

CASP2(Caspase-2) is also named as ICH1, NEDD2 and belongs to the peptidase C14A family. It is involved in the activation cascade of caspases responsible for apoptosis execution and might function by either activating some proteins required for cell death or inactivating proteins necessary for cell survival. It has 2 isoforms produced by alternative splicing and can exist almost as a dimer in solution (PMID:15865942). This antibody can recognize the 32 kDa pro-caspase 2 as well as 18 kDa cleaved-caspase 2.

Storage

Storage:
Store at -80°C.
The product is shipped with ice packs. Upon receipt, store it immediately at -80°C

Storage Buffer:
PBS Only

For technical support and original validation data for this product please contact:

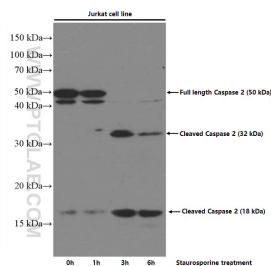
T: 4006900926

E: Proteintech-CN@ptglab.com

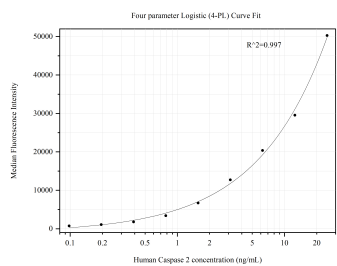
W: ptgcn.com

This product is exclusively available under Proteintech Group brand and is not available to purchase from any other manufacturer.

Selected Validation Data



Untreated and Staurosporine treated Jurkat cells were subjected to SDS PAGE followed by western blot with 66517-1-Ig (Caspase 2/P32/P18 antibody) at dilution of 1:3000 incubated at room temperature for 1.5 hours. This data was developed using the same antibody clone with 66517-1-PBS in a different storage buffer formulation.



Cytometric bead array standard curve of MP50435-1, Caspase 2 Monoclonal Matched Antibody Pair, PBS Only. Capture antibody: 66517-2-PBS. Detection antibody: 66517-1-PBS. Standard:Ag20141. Range: 0.098-25 ng/mL