

For Research Use Only

# E2F1 Monoclonal antibody

Catalog Number: 66515-1-Ig

Featured Product

58 Publications



## Basic Information

Catalog Number:

66515-1-Ig

Concentration:

1900 ug/ml

Source:

Mouse

Isotype:

IgG2b

Immunogen Catalog Number:

AG17363

GenBank Accession Number:

BC050369

GeneID (NCBI):

1869

UNIPROT ID:

Q01094

Full Name:

E2F transcription factor 1

Calculated MW:

437 aa, 47 kDa

Observed MW:

55-60 kDa

Purification Method:

Protein A purification

CloneNo.:

5D7G8

Recommended Dilutions:

WB 1:1000-1:6000

## Applications

Tested Applications:

WB, ELISA

Cited Applications:

WB, IHC, IF, IP, CoIP, ChIP

Species Specificity:

human, rat

Cited Species:

human, mouse, rat

Positive Controls:

WB : LNCaP cells, HepG2 cells, HeLa cells, HEK-293 cells, Jurkat cells, HSC-T6 cells

## Background Information

Transcription factor E2F1 (E2F1), also known as RBBP3, is a transcription activator that binds DNA cooperatively with dp proteins through the E2 recognition site, 5'-TTTC[CG]CGC-3' found in the promoter region of a number of genes whose products are involved in cell cycle regulation or in DNA replication. The DRTF1/E2F complex functions in the control of cell-cycle progression from G1 to S phase. E2F-1 binds preferentially RB1 protein, in a cell-cycle dependent manner. It can mediate both cell proliferation and p53-dependent apoptosis. The calculated molecular weight of E2F1 is 47 kDa, but the sumoylated E2F1 is about 55-60 kDa.

## Notable Publications

Author	Pubmed ID	Journal	Application
Chao Zhang	36093042	iScience	WB, CoIP
Peng Zhang	34659533	J Cancer	WB
Zhen Zhang	36119494	Front Oncol	WB, ChIP

## Storage

Storage:

Store at -20°C. Stable for one year after shipment.

Storage Buffer:

PBS with 0.02% sodium azide and 50% glycerol, pH7.3

Aliquoting is unnecessary for -20°C storage

For technical support and original validation data for this product please contact:

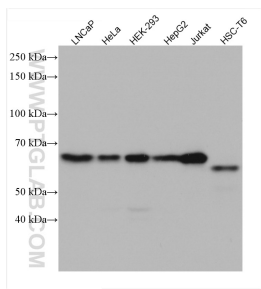
T: 4006900926

E: Proteintech-CN@ptglab.com

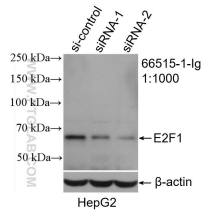
W: ptgcn.com

This product is exclusively available under Proteintech Group brand and is not available to purchase from any other manufacturer.

## Selected Validation Data



Various lysates were subjected to SDS PAGE followed by western blot with 66515-1-Ig (E2F1 antibody) at dilution of 1:3000 incubated at room temperature for 1.5 hours.



WB result of E2F1 antibody (66515-1-Ig; 1:1000; incubated at room temperature for 1.5 hours) with sh-Control and sh-E2F1 transfected HepG2 cells.