

For Research Use Only

PYCR1 Monoclonal antibody, PBS Only (Detector)

Catalog Number: 66510-1-PBS



Basic Information

Catalog Number:	66510-1-PBS	GenBank Accession Number:	BC022244	Purification Method:	Protein A purification
Size:	1mg/ml	GeneID (NCBI):	5831	CloneNo.:	1H2G1
Source:	Mouse	UNIPROT ID:	P32322		
Isotype:	IgG2a	Full Name:	pyrroline-5-carboxylate reductase 1		
Immunogen Catalog Number:	AG17919	Calculated MW:	319 aa, 33.8 kDa		
		Observed MW:	33 kDa, 35 kDa		

Applications

Tested Applications:
WB, IHC, IF/ICC, Cytometric bead array, Indirect ELISA

Species Specificity:
human, mouse, rat

Background Information

PYCR1, also named as P5CR1, belongs to the pyrroline-5-carboxylate reductase family. It is a housekeeping enzyme that catalyzes the last step in proline biosynthesis. PYCR1 can utilize both NAD and NADP, but has higher affinity for NAD. It is involved in the cellular response to oxidative stress. Mutation in PYCR1 will cause ARCL type II (ARCL2B). Some mutation will cause DeBary syndrome (DBS) which is characterized by progeroid features, ophthalmological abnormalities, intrauterine growth retardation, and cutis laxa.

Storage

Storage:
Store at -80°C.

The product is shipped with ice packs. Upon receipt, store it immediately at -80°C

Storage Buffer:
PBS Only

For technical support and original validation data for this product please contact:

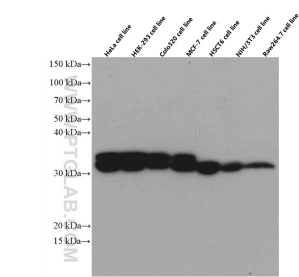
T: 4006900926

E: Proteintech-CN@ptglab.com

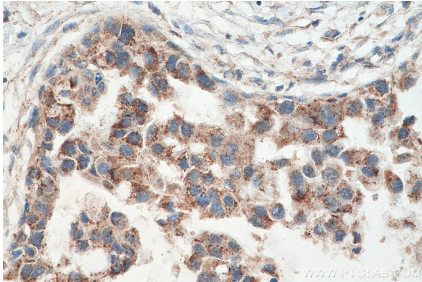
W: ptgcn.com

This product is exclusively available under Proteintech Group brand and is not available to purchase from any other manufacturer.

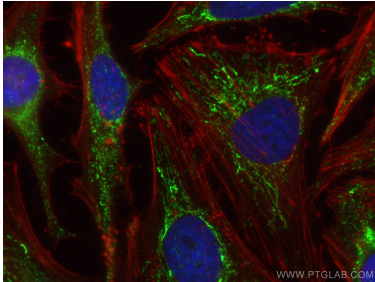
Selected Validation Data



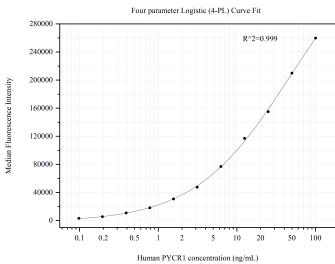
Various lysates were subjected to SDS PAGE followed by western blot with 66510-1-Ig (PYCR1 antibody) at dilution of 1:3000 incubated at room temperature for 1 hour. This data was developed using the same antibody clone with 66510-1-PBS in a different storage buffer formulation.



Immunohistochemical analysis of paraffin-embedded human breast cancer tissue slide using 66510-1-Ig (PYCR1 antibody) at dilution of 1:300 (under 40x lens). Heat mediated antigen retrieval with Tris-EDTA buffer (pH 9.0). This data was developed using the same antibody clone with 66510-1-PBS in a different storage buffer formulation.



Immunofluorescent analysis of (4% PFA) fixed HeLa cells using PYCR1 antibody (66510-1-Ig, Clone: 1H2G1) at dilution of 1:800 and CoraLite®488-Conjugated AffiniPure Goat Anti-Mouse IgG(H+L), CL594-Phalloidin (red). This data was developed using the same antibody clone with 66510-1-PBS in a different storage buffer formulation.



Cytometric bead array standard curve of MP50786-1, PYCR1 Monoclonal Matched Antibody Pair, PBS Only. Capture antibody: 66510-2-PBS. Detection antibody: 66510-1-PBS. Standard: Ag17919. Range: 0.098-100 ng/mL.