

For Research Use Only

SP1 Monoclonal antibody

Catalog Number: 66508-1-Ig **7 Publications**



Basic Information

Catalog Number: 66508-1-Ig	GenBank Accession Number: BC062539	Purification Method: Protein G purification
Source: Mouse	GeneID (NCBI): 6667	CloneNo.: 4G3H3
Isotype: IgG1	ENSEMBL Gene ID: ENSG00000185591	Recommended Dilutions: WB: 1:1000-1:6000 IHC: 1:175-1:700 IF-P: 1:50-1:500 IF/ICC: 1:400-1:1600 FC (Intra): 0.40 ug per 10 ⁶ cells in a 100 µl suspension
Immunogen Catalog Number: AG16720	UNIPROT ID: P08047	
	Full Name: Sp1 transcription factor	
	Calculated MW: 785 aa, 81 kDa	
	Observed MW: 95-105 kDa, 60-65 kDa	

Applications

Tested Applications: WB, IHC, IF/ICC, IF-P, FC (Intra), ELISA	Positive Controls: WB : Jurkat cells, NIH/3T3 cells, HEK-293 cells, HeLa cells IHC : human lung cancer tissue, human colon cancer tissue IF-P : human colon cancer tissue, IF/ICC : HEK-293 cells, FC (Intra) : HEK-293 cells,
Cited Applications: WB, IHC, IF	
Species Specificity: human, mouse, rat	
Cited Species: human, mouse, rat	
Note-IHC: suggested antigen retrieval with TE buffer pH 9.0; (*) Alternatively, antigen retrieval may be performed with citrate buffer pH 6.0	

Background Information

The transcription factor Sp1 is a C2H2 zinc-finger protein that is involved in the regulation of a wide variety of genes, including housekeeping genes and tumor-developing genes. It is associated with tumor development, growth, and metastasis [PMID: 16209919]. It regulates the expression of a large number of genes involved in a variety of processes such as cell growth, apoptosis, differentiation and immune responses. Besides, it has a role in modulating the cellular response to DNA damage, recruiting SMARCA4/BRG1 on the c-FOS promoter, regulation of FE65 gene expression [PMID:11371615,16332679]. SP1 has some isoforms with MW ~95-106 kDa and ~60 kDa [PMID:17462816].

Notable Publications

Author	Pubmed ID	Journal	Application
Shaoheng Li	34811737	Br J Pharmacol	WB
Huanhuan Zhang	34777538	Evid Based Complement Alternat Med	IHC
Siyu Wang	40517486	Placenta	WB

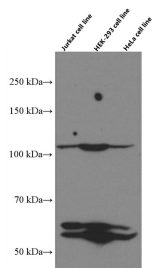
Storage

Storage:
Store at -20°C. Stable for one year after shipment.
Storage Buffer:
PBS with 0.02% sodium azide and 50% glycerol, pH7.3
Aliquoting is unnecessary for -20°C storage

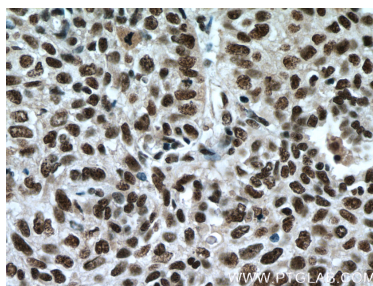
For technical support and original validation data for this product please contact:
T: 4006900926 E: Proteintech-CN@ptglab.com W: ptgcn.com

This product is exclusively available under Proteintech Group brand and is not available to purchase from any other manufacturer.

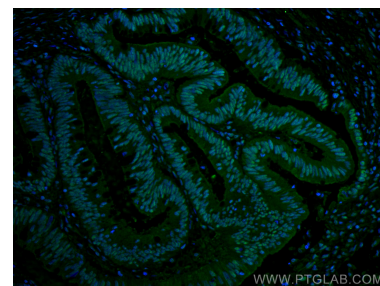
Selected Validation Data



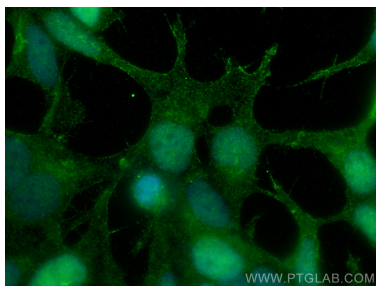
Various cells were subjected to SDS PAGE followed by western blot with 66508-1-Ig (SP1 antibody) at dilution of 1:3000 incubated at room temperature for 1.5 hours.



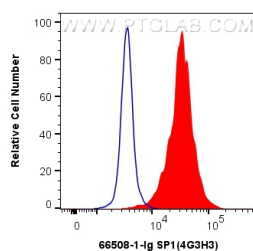
Immunohistochemical analysis of paraffin-embedded human lung cancer tissue slide using 66508-1-Ig (SP1 antibody) at dilution of 1:350 (under 40x lens. Heat mediated antigen retrieval with Tris-EDTA buffer (pH 9.0).



Immunofluorescent analysis of (4% PFA) fixed human colon cancer tissue using SP1 antibody (66508-1-Ig, Clone: 4G3H3) at dilution of 1:200 and CoraLite®488-Conjugated AffiniPure Goat Anti-Mouse IgG(H+L).



Immunofluorescent analysis of (4% PFA) fixed HEK-293 cells using SP1 antibody (66508-1-Ig, Clone: 4G3H3) at dilution of 1:800 and CoraLite®488-Conjugated AffiniPure Goat Anti-Mouse IgG(H+L).



1X10⁶ HEK-293 cells were intracellularly stained with 0.4 ug Anti-Human SP1 (66508-1-Ig, Clone:4G3H3) and CoraLite®488-Conjugated AffiniPure Goat Anti-Mouse IgG(H+L) at dilution 1:1000 (red), or 0.4 ug Mouse IgG1 Isotype Control (MOPC-21) (65124-1-Ig, Clone: MOPC-21) (blue). Cells were fixed with 4% PFA and permeabilized with Flow Cytometry Perm Buffer.