

# NRF2, NFE2L2 Monoclonal antibody, PBS Only (Detector)

Catalog Number: 66504-1-PBS

Featured Product

## Basic Information

**Catalog Number:**

66504-1-PBS

**Size:**

1mg/ml

**Source:**

Mouse

**Isotype:**

IgG2b

**Immunogen Catalog Number:**

AG9469

**GenBank Accession Number:**

BC011558

**GeneID (NCBI):**

4780

**UNIPROT ID:**

Q16236

**Full Name:**

nuclear factor (erythroid-derived 2)-like 2

**Calculated MW:**

605 aa, 68 kDa

**Observed MW:**

110 kDa

**Purification Method:**

Protein A purification

**CloneNo.:**

1E9E3

## Applications

**Tested Applications:**

WB, Cytometric bead array, Indirect ELISA

**Species Specificity:**

human

## Background Information

NRF2, also named as NFE2L2, belongs to the bZIP family and CNC subfamily. It is a transcription activator that binds to antioxidant response (ARE) elements in the promoter regions of target genes. NRF2 is important for the coordinated up-regulation of genes in response to oxidative stress. It may be involved in the transcriptional activation of genes of the beta-globin cluster by mediating enhancer activity of hypersensitive site 2 of the beta-globin locus control region. Nrf2 is a key player in the regulation of genes encoding for many antioxidative response enzymes. The expression of NRF2 may be induced under oxidative stress (PMID:14567983). In lung cancer, Nrf2 activation in malignant cells has been associated with tumor progression and chemotherapy resistance (PMID:20534738). Identifying patients with abnormal NRF2 expression may be important for selection for chemotherapy in NSCLC. As new investigators break into the emerging field of Nrf2 research, confusion regarding the correct migratory pattern of Nrf2 is causing doubts about the accuracy and reproducibility of published results. This letter provides solid evidence that the actually observed molecular weight of Nrf2 is about 70kDa and 95-110 kDa. (PMID: 22703241).

## Storage

**Storage:**

Store at -80°C.

**The product is shipped with ice packs. Upon receipt, store it immediately at -80°C****Storage Buffer:**

PBS Only

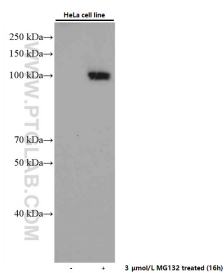
For technical support and original validation data for this product please contact:

T: 4006900926

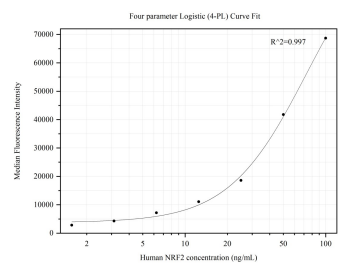
E: [Proteintech-CN@ptglab.com](mailto:Proteintech-CN@ptglab.com)W: [ptgcn.com](http://ptgcn.com)

**This product is exclusively available under Proteintech Group brand and is not available to purchase from any other manufacturer.**

## Selected Validation Data



Untreated and MG132 treated HeLa cells were subjected to SDS PAGE followed by western blot with 66504-1-Ig (NRF2, NFE2L2 antibody) at dilution of 1:2000 incubated at room temperature for 1.5 hours. This data was developed using the same antibody clone with 66504-1-PBS in a different storage buffer formulation.



Cytometric bead array standard curve of MP50316-2, NRF2, NFE2L2 Monoclonal Matched Antibody Pair, PBS Only. Capture antibody: 66504-2-PBS. Detection antibody: 66504-1-PBS. Standard:Ag9469. Range: 1.563-100 ng/mL.