

For Research Use Only

PCCB Monoclonal antibody

Catalog Number: 66501-1-Ig

Featured Product



Basic Information

Catalog Number:

66501-1-Ig

Size:

1000 ug/ml

Source:

Mouse

Isotype:

IgG1

Immunogen Catalog Number:

AG1608

GenBank Accession Number:

BC013768

GeneID (NCBI):

5096

UNIPROT ID:

P05166

Full Name:

propionyl Coenzyme A carboxylase,
beta polypeptide

Calculated MW:

58 kDa

Observed MW:

58 kDa

Purification Method:

Protein G purification

CloneNo.:

1A9A5

Recommended Dilutions:

WB 1:5000-1:10000

IHC 1:150-1:600

IF-P 1:200-1:800

Applications

Tested Applications:

WB, IHC, IF-P, ELISA

Species Specificity:

human, mouse, rat, pig

**Note-IHC: suggested antigen retrieval with
TE buffer pH 9.0; (*) Alternatively, antigen
retrieval may be performed with citrate
buffer pH 6.0**

Positive Controls:

WB : Jurkat cells, human heart tissue, HepG2 cells,
HSC-T6 cells, pig heart tissue, rat heart tissue, mouse
liver tissue

IHC : human heart tissue,

IF-P : mouse kidney tissue, human kidney tissue

Background Information

Storage

Storage:

Store at -20°C. Stable for one year after shipment.

Storage Buffer:

PBS with 0.02% sodium azide and 50% glycerol pH 7.3.

Aliquoting is unnecessary for -20°C storage

For technical support and original validation data for this product please contact:

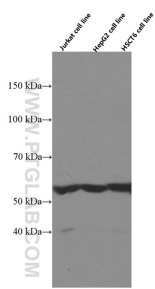
T: 4006900926

E: Proteintech-CN@ptglab.com

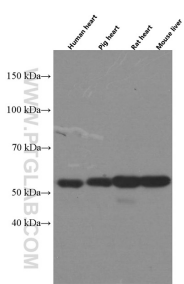
W: ptgcn.com

This product is exclusively available under Proteintech Group brand and is not available to purchase from any other manufacturer.

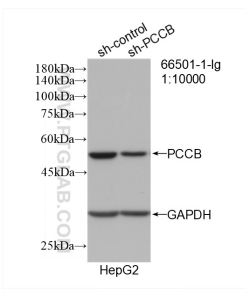
Selected Validation Data



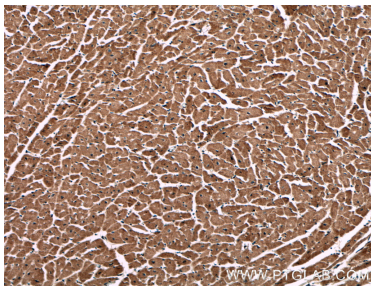
Various lysates were subjected to SDS PAGE followed by western blot with 66501-1-Ig (PCCB antibody) at dilution of 1:5000 incubated at room temperature for 1.5 hours.



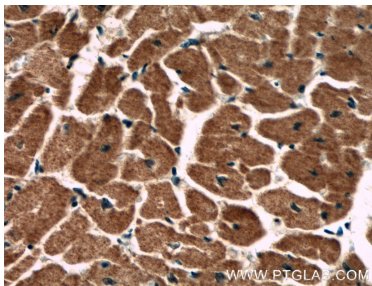
Various lysates were subjected to SDS PAGE followed by western blot with 66501-1-Ig (PCCB antibody) at dilution of 1:5000 incubated at room temperature for 1.5 hours.



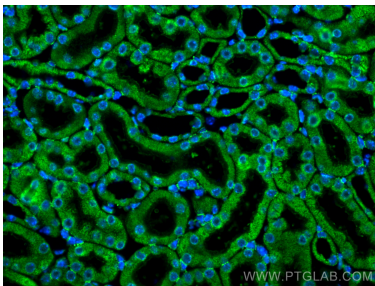
WB result of PCCB antibody (66501-1-Ig; 1:10000; incubated at room temperature for 1.5 hours) with sh-Control and sh-PCCB transfected HepG2 cells.



Immunohistochemical analysis of paraffin-embedded human heart tissue slide using 66501-1-Ig (PCCB antibody) at dilution of 1:300 (under 10x lens).



Immunohistochemical analysis of paraffin-embedded human heart tissue slide using 66501-1-Ig (PCCB antibody) at dilution of 1:300 (under 40x lens).



Immunofluorescent analysis of (4% PFA) fixed paraffin-embedded mouse kidney tissue using PCCB antibody (66501-1-Ig, Clone: 1A9A5) at dilution of 1:400 and CoraLite®488-Conjugated Goat Anti-Mouse IgG(H+L) (SA00013-1). Heat mediated antigen retrieval with Tris-EDTA buffer (pH 9.0).