

For Research Use Only

# TRAF6 Monoclonal antibody

Catalog Number: 66498-1-Ig

Featured Product

60 Publications



## Basic Information

Catalog Number:

66498-1-Ig

Concentration:

1400 ug/ml

Source:

Mouse

Isotype:

IgG1

Immunogen Catalog Number:

AG24696

GenBank Accession Number:

BC031052

GeneID (NCBI):

7189

UNIPROT ID:

Q9Y4K3

Full Name:

TNF receptor-associated factor 6

Calculated MW:

522 aa, 60 kDa

Observed MW:

60 kDa

Purification Method:

Protein A purification

CloneNo.:

1D1E1

Recommended Dilutions:

WB 1:5000-1:20000

IF/ICC 1:200-1:800

## Applications

Tested Applications:

WB, IF/ICC, ELISA

Cited Applications:

WB, IHC, IF, IP, CoIP

Species Specificity:

human

Cited Species:

human, pig, fish

Positive Controls:

WB : A431 cells, HeLa cells, HEK-293 cells, K-562 cells, Jurkat cells, HepG2 cells, U2OS cells

IF/ICC : HeLa cells,

## Background Information

TRAF6 is a member of the TNF receptor associated factor (TRAF) protein family. TRAF6 is recognized as a signal transducer, which activates the NF- $\kappa$ B pathway in response to pro-inflammatory cytokines. TRAF6 has E3 ligase activity and is responsible for inducing Lys-63 (K63)-linked poly-ubiquitination chains, functioning together with E2 Ubc13/Uev1A complex to mediate IKK activation. TRAF6 plays a crucial role in the regulation of the innate and adaptive immune responses.

## Notable Publications

Author	Pubmed ID	Journal	Application
Sujie Dong	36215773	Vet Microbiol	WB
Jiajun Liu	34524943	Autophagy	WB,IF
Zening Qiao	36185691	Front Nutr	WB

## Storage

Storage:

Store at -20°C. Stable for one year after shipment.

Storage Buffer:

PBS with 0.02% sodium azide and 50% glycerol pH 7.3.

Aliquoting is unnecessary for -20°C storage

For technical support and original validation data for this product please contact:

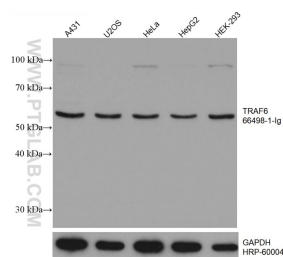
T: 4006900926

E: [Proteintech-CN@ptglab.com](mailto:Proteintech-CN@ptglab.com)

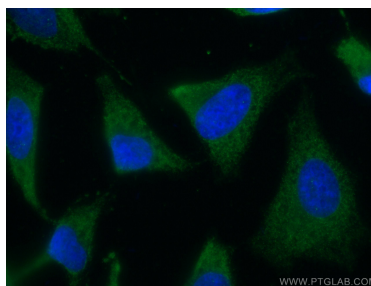
W: [ptgcn.com](http://ptgcn.com)

This product is exclusively available under Proteintech Group brand and is not available to purchase from any other manufacturer.

## Selected Validation Data



Various lysates were subjected to SDS PAGE followed by western blot with 66498-1-Ig (TRAF6 antibody) at dilution of 1:20000 incubated at room temperature for 1.5 hours. The membrane was stripped and reblotted with HRP-conjugated GAPDH Monoclonal antibody (HRP-60004) as loading control.



Immunofluorescent analysis of (-20°C Ethanol) fixed HeLa cells using TRAF6 antibody (66498-1-Ig, Clone: 1D1E1 ) at dilution of 1:400 and CoraLite®488-Conjugated AffiniPure Goat Anti-Mouse IgG(H+L).