

For Research Use Only

# Calretinin Monoclonal antibody, PBS Only (Detector)

Catalog Number: 66496-1-PBS



## Basic Information

Catalog Number:	66496-1-PBS	GenBank Accession Number:	BC015484	Purification Method:	Protein G purification
Size:	1mg/ml	GeneID (NCBI):	794	CloneNo.:	2D7A9
Source:	Mouse	UNIPROT ID:	P22676		
Isotype:	IgG1	Full Name:	calbindin 2		
Immunogen Catalog Number:	AG2924	Calculated MW:	29 kDa		
		Observed MW:	29 kDa		

## Applications

**Tested Applications:**  
WB, IHC, IF/ICC, IF-P, Cytometric bead array, Indirect ELISA

**Species Specificity:**  
human, mouse, rat, pig

## Background Information

Calbindin 2 (calretinin), is an intracellular calcium-binding protein belonging to the troponin C superfamily. Members of this protein family have six EF-hand domains which bind calcium. This protein plays a role in diverse cellular functions, including message targeting and intracellular calcium buffering. It also functions as a modulator of neuronal excitability, and is a diagnostic marker for some human diseases, including Hirschsprung disease and some cancers. Calretinin is a useful marker for differentiating malignant mesothelioma from carcinomas.

## Storage

**Storage:**  
Store at -80°C.  
**The product is shipped with ice packs. Upon receipt, store it immediately at -80°C**

**Storage Buffer:**  
PBS Only

For technical support and original validation data for this product please contact:

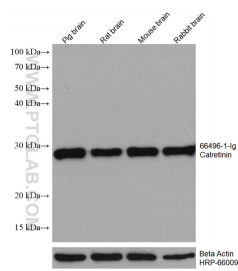
T: 4006900926

E: [Proteintech-CN@ptglab.com](mailto:Proteintech-CN@ptglab.com)

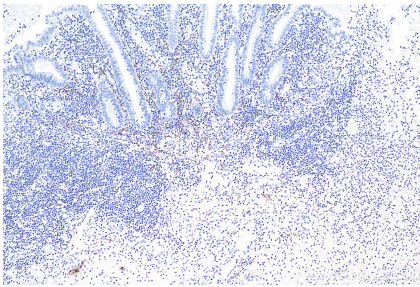
W: [ptgcn.com](http://ptgcn.com)

**This product is exclusively available under Proteintech Group brand and is not available to purchase from any other manufacturer.**

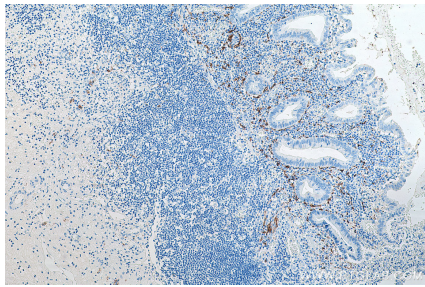
Selected Validation Data



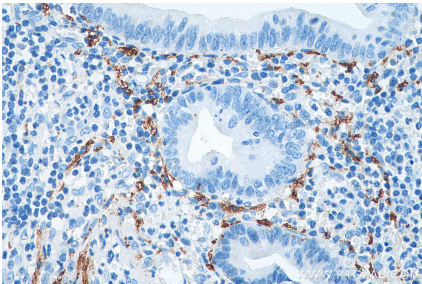
Various lysates were subjected to SDS PAGE followed by western blot with 66496-1-Ig (Calretinin antibody) at dilution of 1:20000 incubated at room temperature for 1.5 hours. The membrane was stripped and reblotted with HRP-conjugated Beta Actin Monoclonal antibody (HRP-66009) as loading control. This data was developed using the same antibody clone with 66496-1-PBS in a different storage buffer formulation.



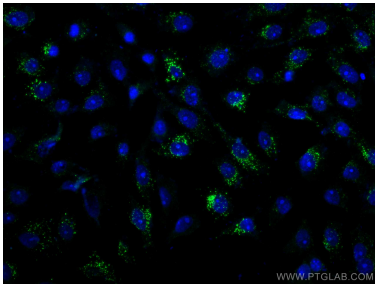
Immunohistochemical analysis of paraffin-embedded human appendicitis tissue slide using 66496-1-Ig (Calretinin antibody) at dilution of 1:4000 (under 10x lens). Heat mediated antigen retrieval with Tris-EDTA buffer (pH 9.0). This data was developed using the same antibody clone with 66496-1-PBS in a different storage buffer formulation.



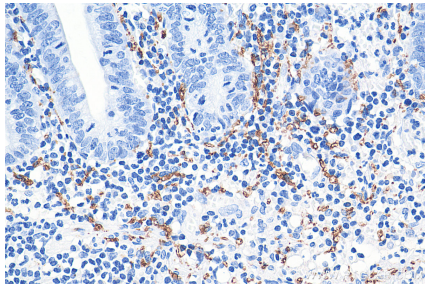
Immunohistochemical analysis of paraffin-embedded human appendicitis tissue slide using 66496-1-Ig (Calretinin antibody) at dilution of 1:5000 (under 10x lens). Heat mediated antigen retrieval with Tris-EDTA buffer (pH 9.0). This data was developed using the same antibody clone with 66496-1-PBS in a different storage buffer formulation.



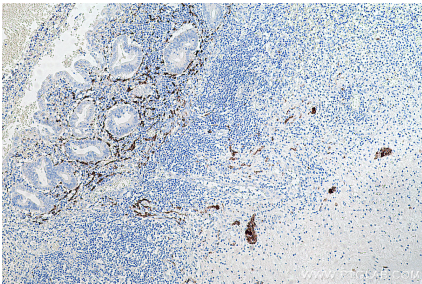
Immunohistochemical analysis of paraffin-embedded human appendicitis tissue slide using 66496-1-Ig (Calretinin antibody) at dilution of 1:5000 (under 40x lens). Heat mediated antigen retrieval with Tris-EDTA buffer (pH 9.0). This data was developed using the same antibody clone with 66496-1-PBS in a different storage buffer formulation.



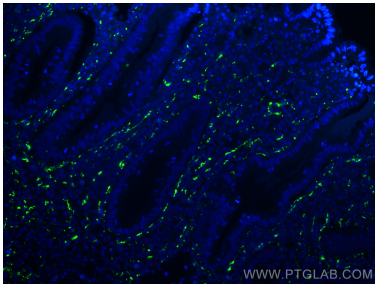
Immunofluorescent analysis of (-20°C Ethanol) fixed SH-SY5Y cells using Calretinin antibody (66496-1-Ig, Clone: 2D7A9) at dilution of 1:100 and CoraLite®488-Conjugated AffiniPure Goat Anti-Mouse IgG(H+L). This data was developed using the same antibody clone with 66496-1-PBS in a different storage buffer formulation.



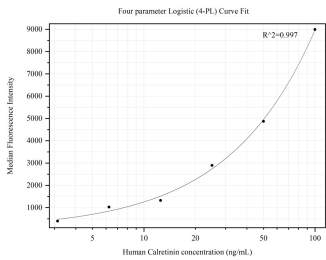
Immunohistochemical analysis of paraffin-embedded human appendicitis tissue slide using 66496-1-Ig (Calretinin antibody) at dilution of 1:4000 (under 40x lens). Heat mediated antigen retrieval with Tris-EDTA buffer (pH 9.0). This data was developed using the same antibody clone with 66496-1-PBS in a different storage buffer formulation.



Immunohistochemical analysis of paraffin-embedded human appendicitis tissue slide using 66496-1-Ig (Calretinin antibody) at dilution of 1:16000 (under 10x lens). Heat mediated antigen retrieval with Tris-EDTA buffer (pH 9.0). This data was developed using the same antibody clone with 66496-1-PBS in a different storage buffer formulation.



Immunofluorescent analysis of (4% PFA) fixed human appendicitis tissue using Calretinin antibody (66496-1-Ig, Clone: 2D7A9) at dilution of 1:400 and CoraLite®488-Conjugated AffiniPure Goat Anti-Mouse IgG(H+L). This data was developed using the same antibody clone with 66496-1-PBS in a different storage buffer formulation.



Cytometric bead array standard curve of MP50295-3, Calretinin Monoclonal Matched Antibody Pair, PBS Only. Capture antibody: 66496-6-PBS. Detection antibody: 66496-1-PBS. Standard:Ag2924. Range: 3.125-100 ng/mL