

For Research Use Only

NRG1, isoform SMDF Monoclonal antibody



Catalog Number: 66492-1-Ig

3 Publications

Basic Information

Catalog Number:

66492-1-Ig

Size:

1000 µg/ml

Source:

Mouse

Isotype:

IgG1

Immunogen Catalog Number:

AG0803

GenBank Accession Number:

BC007675

GeneID (NCBI):

3084

UNIPROT ID:

Q02297

Full Name:

neuregulin 1

Calculated MW:

70 kDa

Observed MW:

70 kDa

Purification Method:

Protein A purification

CloneNo.:

2C6D12

Recommended Dilutions:

WB 1:5000-1:50000

IF/ICC 1:200-1:800

Applications

Tested Applications:

IF/ICC, WB, ELISA

Cited Applications:

WB, IF, IHC

Species Specificity:

Human, pig, mouse, rat, rabbit

Cited Species:

rat, mouse

Positive Controls:

WB : rat brain tissue, HepG2 cells, pig cerebellum tissue, rat cerebellum tissue, mouse cerebellum tissue, mouse brain tissue, rabbit brain tissue

IF/ICC : MCF-7 cells,

Background Information

Neuregulin 1 (NRG1) is a trophic factor that has been implicated in neural development, neurotransmission, and synaptic plasticity. NRG1 has multiple isoforms that are generated by usage of different promoters and alternative splicing of a single gene. NRG1 and its receptor ErbB tyrosine kinase are expressed not only in the developing nervous system, but also in the adult brain. The antibody is specific to NRG1 isoform SMDF.

Notable Publications

Author	Pubmed ID	Journal	Application
Jianxia Wen	32073745	J Cell Mol Med	IHC
Harisa Spahic	36613949	Int J Mol Sci	IF
Yanan Deng	38242426	Prog Neuropsychopharmacol Biol Psychiatry	WB, IF

Storage

Storage:

Store at -20°C. Stable for one year after shipment.

Storage Buffer:

PBS with 0.02% sodium azide and 50% glycerol pH 7.3.

Aliquoting is unnecessary for -20°C storage

For technical support and original validation data for this product please contact:

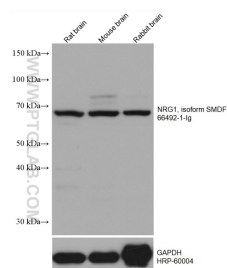
T: 4006900926

E: Proteintech-CN@ptglab.com

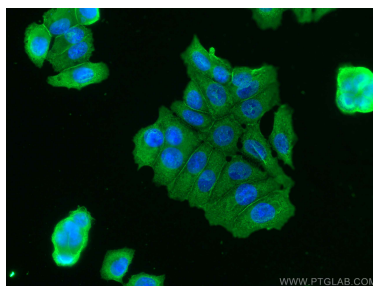
W: ptgcn.com

This product is exclusively available under Proteintech Group brand and is not available to purchase from any other manufacturer.

Selected Validation Data



Various lysates were subjected to SDS PAGE followed by western blot with 66492-1-Ig (NRG1, isoform SMDF antibody) at dilution of 1:10000 incubated at room temperature for 1.5 hours. The membrane was stripped and reblotted with HRP-conjugated GAPDH Monoclonal antibody (HRP-60004) as loading control.



Immunofluorescent analysis of (-20°C Methanol) fixed MCF-7 cells using NRG1, isoform SMDF antibody (66492-1-Ig, Clone: 2C6D12) at dilution of 1:400 and CoraLite®488-Conjugated AffiniPure Goat Anti-Mouse IgG(H+L).