

For Research Use Only

VAMP3/Cellubrevin Monoclonal antibody, PBS Only

Catalog Number: 66488-1-PBS



Basic Information

Catalog Number:

66488-1-PBS

Size:

1mg/ml

Source:

Mouse

Isotype:

IgG2b

Immunogen Catalog Number:

AG1156

GenBank Accession Number:

BC005941

GeneID (NCBI):

9341

UNIPROT ID:

Q15836

Full Name:

vesicle-associated membrane protein
3 (cellubrevin)

Calculated MW:

11 kDa

Observed MW:

17 kDa

Purification Method:

Protein A purification

CloneNo.:

1D10D10

Applications

Tested Applications:

WB, IF/ICC, Indirect ELISA

Species Specificity:

human, mouse, rat, pig

Background Information

VAMP3, also named cellubrevin or synaptobrevin 3, is a member of the vesicle-associated membrane protein (VAMP)/synaptobrevin family. VAMP3 is a v-SNARE (soluble NSF-attachment protein receptor). Characterized by a common sequence called the SNARE motif, SNARE proteins are involved in membrane fusion and vesicular transport (PMID: 11252968). VAMP3 resides in recycling endosomes and endosome-derived transport vesicles, involved in regulating membrane traffic. It is implicated in recycling of transferrin receptors, secretion of alpha-granules in platelets, and membrane trafficking during cell migration.

Storage

Storage:

Store at -80°C.

The product is shipped with ice packs. Upon receipt, store it immediately at -80°C

Storage Buffer:

PBS Only

For technical support and original validation data for this product please contact:

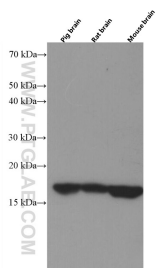
T: 4006900926

E: Proteintech-CN@ptglab.com

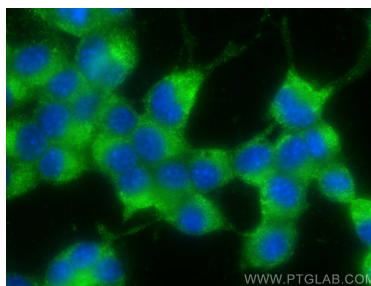
W: ptgcn.com

This product is exclusively available under Proteintech Group brand and is not available to purchase from any other manufacturer.

Selected Validation Data



Pig brain, rat brain and mouse brain tissues were subjected to SDS PAGE followed by western blot with 66488-1-Ig (VAMP3/Cellubrevin antibody) at dilution of 1:10000 incubated at room temperature for 1.5 hours. This data was developed using the same antibody clone with 66488-1-PBS in a different storage buffer formulation.



Immunofluorescent analysis of (-20°C Ethanol) fixed Neuro-2a cells using VAMP3/Cellubrevin antibody (66488-1-Ig, Clone: 1D10D10) at dilution of 1:1800 and CoraLite®488-Conjugated AffiniPure Goat Anti-Mouse IgG(H+L). This data was developed using the same antibody clone with 66488-1-PBS in a different storage buffer formulation.